

Netcong School District



5 Year Long Range Facility Management Plan 2005-2010

Jon Corzine
Governor State of New Jersey

Lucille E. Davy, Acting
Commissioner of Education

James Grube
Chief School Administrator

Peter Pearson
Business Administrator

Bernadette Dalesandro
Board President

Prepared by:



18 West Blackwell Street
Dover, NJ 07801
973-366-2020
Fax: 973-366-0496
www.tritechglobal.com

COPY

*Servicing our Clients with Cost Effective
Engineered Solutions*

© 2005 Tri-Tech Engineering



Existing and Proposed Site and Asset Inventory



Existing and Proposed Site and Asset Inventory

District: Netcong Boro **District Code: 3520** **County: Morris** **District Type:** **District Aid: 40.00%**
LRFP Name: Netcong

Existing										Proposed				
Site Name	Size (acres)	Asset Type	Asset Name	Building Use	Ownership	School Served	Site Name	Size (acres)	Asset Type	Asset Name	Building Use	Ownership	School Served	LRFP Action
Netcong Elem (Site)	5.78				District Owned		Netcong Elem (Site)	5.78						
		Building	Annex Building - Multi-Use Non-instructional	Utility Building	District Owned	Netcong Elem			Building	Annex Building - Multi-Use Non-instructional	Utility Building	District Owned	Netcong Elem	
		Athletic Field / Playground	Basketball Court		District Owned	Netcong Elem			Athletic Field / Playground	Basketball Court		District Owned	Netcong Elem	
		Building	Football Field - Not In Use	Utility Building	District Owned	Netcong Elem								
		Parking Lot	Parking Lot		District Owned	Netcong Elem			Parking Lot	Parking Lot		District Owned	Netcong Elem	
		Athletic Field / Playground	Playground		District Owned	Netcong Elem			Athletic Field / Playground	Playground		District Owned	Netcong Elem	
		Building	Pre-K-8 School	Instructional: Multi-Story	District Owned	Netcong Elem			Building	Pre-K-8 School	Instructional: Multi-Story	District Owned	Netcong Elem	New Construction, Off-Line, System Action

Existing		Proposed	
Total Number of Sites:	1	Total Number of Sites:	1
Total Number of Sites with No Instructional Buildings:	0	Total Number of Sites with No Instructional Buildings:	0
Total Number of Sites with No Instructional Buildings:	0	Total Number of Sites with No Instructional Buildings:	0
Total Number of Schools:	1	Total Number of Schools:	1
Total Number of Instructional Buildings (single and multi-story):	1	Total Number of Instructional Buildings (single and multi-story):	1
Total Number of Administrative and Utility Buildings:	2	Total Number of Administrative and Utility Buildings:	1
Total Number of Athletic Facilities:	0	Total Number of Athletic Facilities:	0
Total Number of Parking Facilities:	0	Total Number of Parking Facilities:	0
Total Number of Temporary Facilities:	0	Total Number of Temporary Facilities:	0



Existing and Proposed School Asset Inventory



Existing Room Inventory (School Model) Report



Existing Room Inventory (School Model) Report

District Name: Netcong Boro
 School Name: Netcong Elem

District Code: 3520
 School Code: 060

County: Morris
 Existing Grades: K, 1, 2, 3, 4, 5, 6, 7, 8,
 PK4, SCSEPK, SCSEK5

Existing FES Model: Elementary/Middle School

Note: Room capacities include a utilization factor of 90% for grades K-8 and 85% for grades 9-12.

Asset Name	Room Type	Room Name	District Comments	Room Qty	NSF per Room	Room NSF Subtotal	Support Spaces (Total NSF)				Room Capacity (incl. room util. rate)				
							Office	Prep Storage	Toilet	Other	Total NSF	District Practices		FES	
							Capacity	Subtotal	Students per Rm	Capacity	Subtotal	Students per Rm	Capacity	Subtotal	
FES Capacity Generating															
PreK-8 School	General Classroom, Grades 1-3	2nd & 3rd Grades-Rooms 101,103 - General Classroom	-	2	690	1,380	0	0	0	0	0	18.90	37.80	15.34	30.68
PreK-8 School	General Classroom, Grades 1-3	General Classroom, #102,104,106	-	3	550	1,650	0	0	0	0	0	18.90	56.70	12.23	36.69
PreK-8 School	General Classroom, Grades 1-3	General Classroom, Room#108	-	1	765	765	0	0	0	0	0	18.90	18.90	17.01	17.01
PreK-8 School	General Classroom, Grades 4-5	4th Grades-Rooms 105,107 - General Classroom	-	2	690	1,380	0	0	0	0	0	18.90	37.80	17.85	35.71
PreK-8 School	General Classroom, Grades 4-5	General Classroom	-	1	900	900	0	0	0	0	0	20.70	20.70	20.70	20.70
PreK-8 School	General Classroom, Grades 6-8	Lang Arts- Room 203 - General Classroom	This classroom houses students from 5th grade to 8th grade	1	660	660	0	0	0	0	0	21.60	21.60	17.08	17.08
PreK-8 School	General Classroom, Grades 6-8	Math - General Classroom	This classroom houses students from 5th grade to 8th grade	1	540	540	0	0	0	0	0	21.60	21.60	13.97	13.97
PreK-8 School	General Classroom, Grades 6-8	Reading-Room 202	This classroom houses students from 5th grade to 8th grade	1	726	726	0	0	0	0	0	21.60	21.60	18.79	18.79



Existing Room Inventory (School Model) Report

PreK-8 School	General Classroom, Grades 6-8	Soc Studies-Room 201 - General Classroom	This classroom actually houses students from 5th grade to 8th grade	1	660	660	0	0	0	0	0	0	21.60	21.60	17.08	17.08
PreK-8 School	General Classroom, Grades 6-8	World Lang-Room 206 - World Languages Classroom	This classroom houses students from 5th grade to 8th grade	1	616	616	0	0	0	0	0	0	21.60	21.60	15.94	15.94
PreK-8 School	Kindergarten	Kindergarten - Kindergarten Classroom	-	1	665	665	0	0	0	75	0	75	18.90	18.90	13.96	13.96
PreK-8 School	Pre-Kindergarten	Pre-K-4 - Pre-Kindergarten	-	1	684	684	0	0	0	15	0	15	15.00	15.00	11.40	11.40
Specialized Space																
PreK-8 School	Assembly / Large Group	Stage - Stage Library/Media Center - Library / Media Center	-	1	1,020	1,020	0	0	0	0	0	0	0.00	0.00	0.00	0.00
PreK-8 School	Media Services	Multi-Purpose (PE and Food Services) Room	-	1	1,194	1,194	0	0	0	0	0	0	0.00	0.00	0.00	0.00
PreK-8 School	Physical Education / Large Group	Locker Rooms - Locker Room	-	1	5,000	5,000	0	0	480	0	0	480	0.00	0.00	0.00	0.00
PreK-8 School	Physical Education / Large Group	PE Instructor's Office - PE Instructor's Office	-	2	500	1,000	0	0	0	55	0	55	0.00	0.00	0.00	0.00
PreK-8 School	Science	Science Room - Science Classroom	-	2	132	264	0	0	0	0	0	0	0.00	0.00	0.00	0.00
PreK-8 School	Science Small Group Instruction	Resource Room - OT/PT Room	-	1	735	735	0	0	105	0	0	105	20.40	20.40	0.00	0.00
PreK-8 School	Small Group Instruction	Sm Grp Instruction - OT/PT Room	-	1	360	360	0	0	0	0	0	0	0.00	0.00	0.00	0.00
PreK-8 School	Small Group Instruction	Small Group Instructional-Rm 205	-	1	294	294	0	0	0	0	0	0	0.00	0.00	0.00	0.00
PreK-8 School	Small Group Instruction	Speech Room - Speech Therapy Room	-	1	294	294	0	0	0	0	0	0	0.00	0.00	0.00	0.00
PreK-8 School	Technological Literacy	Computer Room - Computer Lab	-	1	924	924	0	0	0	0	0	0	0.00	0.00	0.00	-0.00



Existing Room Inventory (School Model) Report

PreK-8 School	Visual and Performing Arts	Art Room - Art Studio	851	851	0	0	48	0.00	0.00	0.00	0.00
PreK-8 School	Visual and Performing Arts	Music Classroom - Music Classroom	1	1,170	0	0	256	0.00	0.00	0.00	0.00
Administrative / Support											
PreK-8 School	Administrative / Student Services	Main Office - Main Office / Reception	1	350	0	0	0	0.00	0.00	0.00	0.00
PreK-8 School	Administrative / Student Services	Principal's Office - Principal's Office	1	288	0	0	0	0.00	0.00	0.00	0.00
PreK-8 School	Administrative / Student Services	Superintendent's Office	1	192	0	0	0	0.00	0.00	0.00	0.00
PreK-8 School	Faculty	Conference Room - Faculty Conference Room	1	198	0	0	0	0.00	0.00	0.00	0.00
PreK-8 School	Faculty	Teacher's work/copy room	1	198	0	0	0	0.00	0.00	0.00	0.00
PreK-8 School	Faculty	Teachers' Lounge	1	198	0	0	50	0.00	0.00	0.00	0.00
PreK-8 School	Health Services	Nurse's Suite - Nurse's Office	1	120	0	0	144	0.00	0.00	0.00	0.00
CAPACITY TOTALS											
Capacity per District Practices											
Capacity per FES											
NSF TOTALS (including support spaces):											
Specialized Space: 14,572											
FES Capacity Generating: 10,716											
Administrative / Support: 1,738											
TOTAL NSF 27,026											
Grossing Factor Spaces:											
PreK-8 School	Building System	Boiler Room	1	704	0	0	0	0.00	0.00	0.00	0.00
PreK-8 School	Building System	Boiler Room	1	675	0	0	0	0.00	0.00	0.00	0.00
PreK-8 School	Building System	Mechanical Room	1	198	0	0	0	0.00	0.00	0.00	0.00
PreK-8 School	Lobby / Vestibule / Corridor	Lobby/Vestibule/Corridor	1	18,500	0	0	0	0.00	0.00	0.00	0.00
PreK-8 School	Storage	Storage	1	175	0	0	0	0.00	0.00	0.00	0.00
PreK-8 School	Storage	Storage	1	264	0	0	0	0.00	0.00	0.00	0.00
PreK-8 School	Toilet	Bathroom	1	300	0	0	0	0.00	0.00	0.00	0.00
Total Grossing Factor Space: 20,816											
Estimated Grossing Factor: 1.77											
SCHOOL TOTALS											
Total GSF 47,842											
Capacity per FES 334.20											
249.01											

PreK-8 School	Building System	Boiler Room	704	704	0	0	0	0.00	0.00	0.00	0.00
PreK-8 School	Building System	Boiler Room	1	675	0	0	0	0.00	0.00	0.00	0.00
PreK-8 School	Building System	Mechanical Room	1	198	0	0	0	0.00	0.00	0.00	0.00
PreK-8 School	Lobby / Vestibule / Corridor	Lobby/Vestibule/Corridor	1	18,500	0	0	0	0.00	0.00	0.00	0.00
PreK-8 School	Storage	Storage	1	175	0	0	0	0.00	0.00	0.00	0.00
PreK-8 School	Storage	Storage	1	264	0	0	0	0.00	0.00	0.00	0.00
PreK-8 School	Toilet	Bathroom	1	300	0	0	0	0.00	0.00	0.00	0.00
Total Grossing Factor Space: 20,816											
Estimated Grossing Factor: 1.77											
SCHOOL TOTALS											
Total GSF 47,842											
Capacity per FES 334.20											
249.01											



Existing Room Inventory (School Model) Report

Existing GSF/Student (per FES Capacity)	192.13
GSF/Student Allowance	128.15
Unadjusted excess GSF	15,932



Proposed Room Inventory (School Model) Report



Proposed Room Inventory (School Model) Report

District Name: Netcong Boro District Code: 3520 County: Morris Existing FES Model: Elementary/Middle School
 Existing School Name: Netcong Elem School Code: 060 Existing Grades: K, 1, 2, 3, 4, 5, 6, 7, 8, PK4, SCSEPK, SCSEK5
 Proposed School Name: Netcong Elem LRRP Name: Netcong Proposed Grades: K, 1, 2, 3, 4, 5, 6, 7, 8, PK4 Proposed FES Model: Elementary/Middle School

Note: Room capacities include a utilization factor of 90% for grades K-8 and 85% for grades 9-12.

Asset Name	Room Type (Existing Room Type if Reassigned)	Room Name (Existing Room Name if Reassigned)	Inventory Action	Rm Qty	NSF per Room	Room NSF Subtotal	Support Spaces (Total NSF)						Room Capacity (incl. room util. rate)					
							Office	Prep	Storage	Toilet	Other	Total NSF	District Capacity	District Students per Rm	FES Capacity	FES Students per Rm		
PreK-8 School	General Classroom, Grades 1-3	2nd & 3rd Grades-Rooms 101,103 - General Classroom	no action	2	690	1,380	0	0	0	0	0	0	0	0	18.90	37.80	15.34	30.68
PreK-8 School	General Classroom, Grades 1-3	General Classroom	new construction	1	900	900	0	0	0	0	0	0	0	0	18.90	18.90	18.90	18.90
PreK-8 School	General Classroom, Grades 1-3	General Classroom	new construction	1	900	900	0	0	0	0	0	0	0	0	18.90	18.90	18.90	18.90
PreK-8 School	General Classroom, Grades 1-3	General Classroom #102,104,106	no action	3	550	1,650	0	0	0	0	0	0	0	0	18.90	56.70	12.23	36.69
PreK-8 School	General Classroom, Grades 1-3	General Classroom Room#108	no action	1	765	765	0	0	0	0	0	0	0	0	18.90	18.90	17.01	17.01
PreK-8 School	General Classroom, Grades 4-5	4th Grades- Rooms 105,107 - General Classroom	no action	2	690	1,380	0	0	0	0	0	0	0	0	18.90	37.80	17.85	35.71
PreK-8 School	General Classroom, Grades 4-5	General Classroom	new construction	1	900	900	0	0	0	0	0	0	0	0	20.70	20.70	20.70	20.70
PreK-8 School	General Classroom, Grades 4-5	General Classroom	new construction	1	900	900	0	0	0	0	0	0	0	0	20.70	20.70	20.70	20.70
PreK-8 School	General Classroom, Grades 4-5	General Classroom	no action	1	900	900	0	0	0	0	0	0	0	0	20.70	20.70	20.70	20.70
PreK-8 School	General Classroom, Grades 6-8	Lang Arts- Room 203 - General Classroom	no action	1	660	660	0	0	0	0	0	0	0	0	21.60	21.60	17.08	17.08
PreK-8 School	General Classroom, Grades 6-8	Math - General Classroom	no action	1	540	540	0	0	0	0	0	0	0	0	21.60	21.60	13.97	13.97
PreK-8 School	General Classroom, Grades 6-8	Reading-Room 202	no action	1	726	726	0	0	0	0	0	0	0	0	21.60	21.60	18.79	18.79
PreK-8 School	General Classroom, Grades 6-8	Soc Studies- Room 201 - General Classroom	no action	1	660	660	0	0	0	0	0	0	0	0	21.60	21.60	17.08	17.08

FES Capacity Generating



Proposed Room Inventory (School Model) Report

PreK-8 School	General Classroom, Grades 6-8	World Lang-Room 206 - World Languages Classroom	no action	1	616	616	0	0	0	0	0	0	21.60	15.94	15.94
PreK-8 School	Kindergarten	Kindergarten - Classroom	no action	1	665	665	0	0	75	0	75	18.90	13.96	13.96	
PreK-8 School	Pre-Kindergarten	Pre-K-4 - Pre-Kindergarten	no action	1	684	684	0	0	15	0	15	15.00	11.40	11.40	

Specialized Space

PreK-8 School	Assembly / Large Group	Stage - Stage	no action	1	1,020	1,020	0	0	0	0	0	0	0.00	0.00	0.00
PreK-8 School	Food Services / Large Group	Kitchen Addition Library/Media Center - Library / Media Center	new construction	1	400	400	0	0	0	0	0	0.00	0.00	0.00	0.00
PreK-8 School	Media Services	Multi-Purpose (PE and Food Services)	no action	1	1,194	1,194	0	0	0	0	0	0.00	0.00	0.00	0.00
PreK-8 School	Physical Education / Large Group	Locker Rooms - Locker Room	no action	1	5,000	5,000	0	0	480	0	480	0.00	0.00	0.00	0.00
PreK-8 School	Physical Education / Large Group	PE Instructor's Office - PE Instructor's Office	no action	2	500	1,000	0	0	55	0	55	0.00	0.00	0.00	0.00
PreK-8 School	Science	Science Room - Resource Room	no action	1	735	735	0	0	105	0	105	20.40	0.00	0.00	0.00
PreK-8 School	Small Group Instruction	OT/PT Room	no action	1	522	522	0	0	0	0	0	0.00	0.00	0.00	0.00
PreK-8 School	Small Group Instruction	Sm Grp Instruction - OT/PT Room	no action	1	360	360	0	0	0	0	0	0.00	0.00	0.00	0.00
PreK-8 School	Small Group Instruction	Small Group Instructional- Rm 205	no action	1	294	294	0	0	0	0	0	0.00	0.00	0.00	0.00
PreK-8 School	Small Group Instruction	Speech Room - Speech Therapy Room	no action	1	294	294	0	0	0	0	0	0.00	0.00	0.00	0.00
PreK-8 School	Technological Literacy	Computer Room - Computer Lab	no action	1	924	924	0	0	0	0	0	0.00	0.00	0.00	0.00
PreK-8 School	Visual and Performing Arts	Art Room - Art Studio	no action	1	851	851	0	0	48	0	48	0.00	0.00	0.00	0.00
PreK-8 School	Visual and Performing Arts	Music Classroom - Music Classroom	no action	1	1,170	1,170	0	0	256	0	256	0.00	0.00	0.00	0.00

Administrative / Support

PreK-8 School	Administrative / Student Services	Main Office - Main Office / Reception	no action	1	350	350	0	0	0	0	0	0.00	0.00	0.00	0.00
---------------	-----------------------------------	---------------------------------------	-----------	---	-----	-----	---	---	---	---	---	------	------	------	------



Proposed Room Inventory (School Model) Report

PreK-8 School	Administrative / Student Services	Principal's Office - Superintendent's Office	no action	1	288	288	0	0	0	0	0	0	0	0.00	0.00	0.00
PreK-8 School	Administrative / Student Services	Office	no action	1	192	192	0	0	0	0	0	0	0	0.00	0.00	0.00
PreK-8 School	Faculty	Conference Room - Faculty Conference Room	no action	1	198	198	0	0	0	0	0	0	0	0.00	0.00	0.00
PreK-8 School	Faculty	Teacher's work/copy room	no action	1	198	198	0	0	0	0	0	0	0	0.00	0.00	0.00
PreK-8 School	Faculty	Teachers' Lounge	no action	1	198	198	0	0	0	50	0	50	0	0.00	0.00	0.00
PreK-8 School	Health Services	Nurse's Suite - Nurse's Office	no action	1	120	120	0	0	0	144	0	144	0	0.00	0.00	0.00

CAPACITY TOTALS																		
Capacity per District Practices																		
Capacity per FES																		413.40

NSF TOTALS (including support spaces):																		
Specialized Space:																		
FES Capacity Generating:																		
Administrative / Support:																		
TOTAL NSF																		328.21

Grossing Factor Spaces:																		
PreK-8 School	Building System	Boiler Room	no action	1	704	704	0	0	0	0	0	0	0	0	0	0	0	
PreK-8 School	Building System	Boiler Room	no action	1	675	675	0	0	0	0	0	0	0	0	0	0	0	
PreK-8 School	Building System	Mechanical Room	no action	1	198	198	0	0	0	0	0	0	0	0	0	0	0	
PreK-8 School	Lobby / Vestibule / Corridor	Lobby/Vestibule/Corridor	no action	1	18,500	18,500	0	0	0	0	0	0	0	0	0	0	0	
PreK-8 School	Storage	Storage	no action	1	175	175	0	0	0	0	0	0	0	0	0	0	0	
PreK-8 School	Storage	Storage	no action	1	264	264	0	0	0	0	0	0	0	0	0	0	0	
PreK-8 School	Toilet	Bathroom	no action	1	300	300	0	0	0	0	0	0	0	0	0	0	0	
Total Grossing Factor Space:																		20,816
Estimated Grossing Factor:																		1.67

SCHOOL TOTALS																		
Total GSF																		51,842
Proposed GSF / Student (per FES Capacity)																		157.96
GSF/Student Allowance																		127.99
Unadjusted excess GSF																		9,835



Cohort-Survival Enrollment Projection Report

**NEW JERSEY DEPARTMENT OF EDUCATION, OFFICE OF
SCHOOL FACILITIES, 2005 LRFP**



Cohort-Survival Enrollment Projection Report

NEW JERSEY DEPARTMENT OF EDUCATION, OFFICE OF SCHOOL FACILITIES, 2005 LRFP

DISTRICT NAME: Netcong Boro COUNTY: MORRIS LRFP: Netcong

School Year	Births 5 Yrs. Ago		1st Gr.		2nd Gr.		3rd Gr.		4th Gr.		5th Gr.		K-5 Subst. SCSE		K-5 Total (exc PK)		PK SCSE Syrs.		PK 4yrs. Total		6th Gr.		7th Gr.		8th Gr.		6-8 Subst. SCSE Total		6-8 Total		9th Gr.		10th Gr.		11th Gr.		12th Gr.		9-12 Subst. SCSE Total		9-12 Total		PK Subst. SCSE Total		K-12 Subst. SCSE Total		K-12 Total w/ PK-12 Total	
	43	33	39	30	30	30	33	30	33	30	37	32	32	184	9	193	-	1	18	212	28	25	33	86	5	91	-	-	-	-	-	-	-	-	-	-	-	-	-	-	-	-	-	-	-	-	-	-
2000	44	24	32	33	23	21	21	156	-	-	25	156	26	156	26	156	-	-	-	156	29	33	26	88	-	88	-	-	-	-	-	-	-	-	-	-	-	-	-	-	-	-	-	-	-	-	-	-
2001	41	24	26	31	24	21	22	148	4	-	27	167	30	167	30	167	-	-	-	167	27	33	30	80	8	88	-	-	-	-	-	-	-	-	-	-	-	-	-	-	-	-	-	-	-	-	-	-
2002	47	23	25	26	36	34	24	168	-	-	31	168	31	168	31	168	-	-	-	168	31	33	31	94	-	94	-	-	-	-	-	-	-	-	-	-	-	-	-	-	-	-	-	-	-	-	-	-
2003	33	30	26	25	26	32	35	174	1	-	31	175	31	175	31	175	-	-	-	175	27	31	31	89	0	89	-	-	-	-	-	-	-	-	-	-	-	-	-	-	-	-	-	-	-	-	-	-
2004	42	25	34	25	23	29	32	168	1	-	29	169	32	169	32	169	-	-	-	193	32	31	28	91	-	91	-	-	-	-	-	-	-	-	-	-	-	-	-	-	-	-	-	-	-	-	-	-
2005		0.66	1.07	0.95	0.92	1.01	1.07													1.05	1.17	1.03																										
Average Survival Rate																																																

PROJECTIONS

2006	36	24	27	33	23	24	32	163	0	-	34	167	34	167	34	167	4	0	0	167	34	38	33	105	0	105	0	0	0	0	0	0	0	0	0	0	0	0	0	0	0	0	0	0	0	0	0	0	0	0
2007	38	26	26	26	31	24	26	159	0	-	34	163	34	163	34	163	4	0	0	163	40	40	40	114	0	114	0	0	0	0	0	0	0	0	0	0	0	0	0	0	0	0	0	0	0	0	0	0	0	0
2008	38	26	28	25	24	32	26	161	0	-	32	161	32	161	32	161	5	0	0	165	28	40	42	110	0	110	0	0	0	0	0	0	0	0	0	0	0	0	0	0	0	0	0	0	0	0	0	0	0	0
2009	41	28	28	27	23	25	35	166	0	-	25	166	25	166	25	166	5	0	0	171	28	33	42	103	0	103	0	0	0	0	0	0	0	0	0	0	0	0	0	0	0	0	0	0	0	0	0	0	0	0
*2010	41	28	31	27	25	24	27	162	0	-	24	167	24	167	24	167	5	0	0	167	37	33	35	105	0	105	0	0	0	0	0	0	0	0	0	0	0	0	0	0	0	0	0	0	0	0	0	0	0	0
Baseline		28	31	27	25	24	27	162	0	-	24	167	24	167	24	167	5	0	0	167	37	33	35	105	0	105	0	0	0	0	0	0	0	0	0	0	0	0	0	0	0	0	0	0	0	0	0	0	0	0
District Proposed		28	28	29	26	26	30	167	0	-	26	188	26	188	26	188	0	0	0	188	26	27	30	83	0	83	0	0	0	0	0	0	0	0	0	0	0	0	0	0	0	0	0	0	0	0	0	0	0	0



Existing and Projected Enrollment and School Grade Alignment



Existing and Projected Enrollment and School Grade Alignment

County: MORRIS District: Netcong Boro District Code: 3520 District Type: Netcong LRRP: Netcong

School Code	School Name	Existing School Enrollment and Grade Alignments (K-12 includes Self-Contained Special Education Students)						District Proposed School Enrollment and Grade Alignments (K-12 includes Self-Contained Special Education Students)						
		Grades	K-5	6-8	9-12	Sub total	PK	Grades	K-5	6-8	9-12	Sub total	PK	
060	Netcong Elem	K, 1, 2, 3, 4, 5, 6, 7, 8, PK4, SCSEPK, SCSEK5	169	91	0	260	1	167	83	0	250	0	271	
Total			169	91	0	260	1	167	83	0	250	0	271	
								Proposed District-wide Projections	167	83	0	250	0	271
								Difference	0	0	0	0	0	0
								Baseline Website Projections	162	105	0	267	0	272
								Difference	5	-22	0	-17	0	-1

Negative numbers in the "Difference" lines represent unassigned students based on the proposed or baseline district-wide projections, with more students projected than assigned to the schools.

Positive numbers in the "Difference" lines represent over-assigned students based on the proposed or baseline district-wide projections, with fewer students projected than assigned to the schools.



FES and District Practices Capacity Report



FES and District Practices Capacity Report

LRFP: Netcong

District Type:

District Code: 3520

District: Netcong Boro

County: MORRIS

NOTE: The FES Analysis is based on the FES version referenced in the 2002 Bi-Annual Report.

School Code	Existing School Name	Proposed School Name	Proposed Grades K, 1, 2, 3, 4, 5, 6, 7, 8, PK4	Proposed School Enrollment	Existing Capacity			Proposed Capacity				
					FES Capacity		District Practices		FES Capacity		District Practices	
					Existing FES Capacity	Capacity Status	Existing District Practices	Capacity Status	Proposed FES Capacity	Capacity Status	Proposed District Practices	Capacity Status
060	Netcong Elem	Netcong Elem		271	249.01	-21.99	334.20	63.20	328.21	57.21	413.40	142.40
District Totals				271	249.01	-21.99	334.20	63.20	328.21	57.21	413.40	142.40
Grade Totals:				Overassigned Students								
PK				21	11.40	-9.60	15.00	-6.00	11.40	-9.60	15.00	-6.00
Grades K-5				167	154.76	-12.24	204.06	37.06	233.96	66.96	283.63	116.63
Grades 6-8				83	82.85	-0.15	115.14	32.14	82.85	-0.15	114.77	31.77
Grades 9-12				0	0.00	0.00	0.00	0.00	0.00	0.00	0.00	0.00

"Overassigned" represents the number of students, based on the Proposed School Enrollments, that exceed the Proposed District-wide Enrollments.

"Unassigned" represents the number of students, based on the Proposed District-wide Enrollments, that are not assigned to a school. Negative numbers indicate inadequate capacity; Positive numbers indicate surplus capacity.



Functional Capacity and Unhoused Students



Functional Capacity and Unhoused Students

District: Netcong Boro District Code: 3520 County: Morris District Type: LRF: Netcong
 NOTE: The FES Analysis is based on the FES version referenced in the 2002 Bi-Annual Report.

School Code	Existing School Name	Proposed School Name	Proposed Grades	Proposed Enrollment	FES Area Allowance	PRIOR TO PROPOSED WORK (EXCLUDING DEMOLITION/OFFLINE)						AFTER COMPLETION OF PROPOSED WORK					
						Existing GSF	Adjusted Existing GSF	Adjusted Functional Capacity	Unhoused Students	Estimated Maximum Approved Area for Unhoused Students	Proposed New GSF	Proposed GSF	Adjusted Proposed GSF	Proposed Functional Capacity	Unhoused Students After Construction	Estimated Maximum Approved Area for Unhoused Students Remaining	
060	Netcong Elem	Netcong Elem	K, 1, 2, 3, 4, 5, 6, 7, 8, PK4	271	127.99	47,842	37,696	294.53				4,000	41,696	325.78			
	District Totals			271		47,842	37,696	294.53				4,000	41,696	325.78			
Grade Totals:																	
	PK			21	125.00	899	699	5.46	15.54	1,942.32		0	699	5.46	15.54	1,942.32	
	Grades K-5			167	125.00	30,947	24,123	188.48	0.00	0.00		3,867	27,990	218.70	0.00	0.00	
	Grades 6-8			83	134.00	16,196	12,874	100.59	0.00	0.00		133	13,007	101.63	0.00	0.00	
	Grades 9-12			0	151.00	0	0	0.00	0.00	0.00		0	0	0.00	0.00	0.00	



Functional Capacity Excluded Square Feet



Functional Capacity Excluded Square Feet

District Name: Netcong Boro
 Existing School Name: Netcong Elem

District Code: 3520
 School Code: 060

County: Morris

Existing Grades: K, 1, 2, 3, 4, 5, 6, 7, 8, PK4, SCSEPK,
 SCSEK5

Existing FES Model: Elementary/Middle School

Proposed School Name: Netcong Elem

LRRP Name: Netcong

Proposed Grades: K, 1, 2, 3, 4, 5, 6, 7, 8, PK4
 Proposed FES Model: Elementary/Middle School

NOTE: The FES Analysis is based on the FES version referenced in the 2002 Bi-Annual Report.

Asset Name	Room Type	Room Name	District Comments	FES NSF per Room Allowance	Room NSF	Excess SF per Room	Rm. Qty.	Total Excess SF	Excess SF per Room ≥ 400 SF
Program Space Exclusions									
PreK-8 School	General Classroom, Grades 4-5	General Classroom		800	900	100	1	100	100
Total NSF Program Space Exclusions								100	
Total GSF Program Space Exclusions (NSF X 1.40)								140	
Grossing Factor Space Exclusions									
Total Grossing Factor SF in Excess of 1.40									
Proposed Demolition/Offline Exclusions									
Total GSF Demolition/Offline								10,006	
Total Excluded Square Feet								0	
Total Existing School Gross Square Feet								10,146	
Adjusted Total GSF for Functional Capacity Calculation								47,842	
								37,696	

8/2/2006

FES		
	K-8	Sq. Ft./
Room Name	Students/	Room
	Room	

FES Capacity Gen. Rms.

Kindergarten Clrm	21	900
Kindergarten Toilet		50
General Clrm (Gr. 1-3)	21	850
General Clrm (Gr. 4-5)	23	800
General Clrm (Gr. 6-8)	23	800
Self-Contained SEC	12	600

Art & Music		2400
Computer Room		950
Gymnasium		9600
Net SQ to include gym, locker rooms & offices		

Media center, net SF to include related support & 250 SF work/storage		5850
---	--	------

Small Group Inst. Rm. All	400 ea.
---------------------------	---------

Administrative/ Support	
Health Services	400
Net SF to include toilet & nurse exam. Room	
Administrative/Student Services Allow. 2,275	
Includes main office, principal's office, conf. Rm. student services offices, tech. Coord. Office, security office, etc.	
Faculty Room	520

Totals	
Max. Cap.	
FTE (90% Utilization Rate)	
Total Net SF	
Grossing Factor	1.4
Total Gross SF	
Gross SF per FTE	

DISTRICT MODEL					
Grades K-8					
Room Name	No. of Rooms	Students/ Room	Total Capacity	Sq. Ft./ Room	Total NSF

Room Name	No. of Rooms	Students/ Room	Total Capacity	Sq. Ft./ Room	Total NSF
-----------	--------------	----------------	----------------	---------------	-----------

PreKindergarten/Toilet	1	21	21	684	684
Kindergarten/Toilet	1	21	21	665	665
General Clm Gr. (1-3)	1	21	21	690	690
General Clm Gr. (1-3)	1	21	21	690	690
General Clm Gr. (1-3)	3	21	21	550	1650
General Clm Gr. (1-3)	1	21	21	765	765
General Clm Gr. (4-5)	2	23	46	831	1662
General Clm Gr. (4-5)	1	23	23	900	900
World Language (5-8)	1	23	23	616	616
Social Studies (5-8)	1	23	23	660	660
Reading (5-8)	1	23	23	726	726
Math (5-8)	1	23	23	540	540
Language Arts (5-8)	1	23	23	660	660
SGI	1			522	522
SGI	1			360	360
SGI	1			294	294
SGI	1			294	294
Computer Room	1			924	924
Media Center	1			1194	1194
Art Room	1			851	851
Science	1			735	735
Music Room	1			1170	1170
Multi Purpose Room	1			5,000	5,000
Storage/Utility Rooms					2468
Stage	1			1020	1020
Locker Rooms				500	500
Teachers Lounge	1			198	198
Teachers Work/Copy Room	1			198	198

Administrative Space					
Nurse	1			120	120
Main Office, Conf. Rm., Student Services, Copy Room, Supt. Office, Tech. Coord.					3354

Max. Cap.					310
FTE (90%) Utilization Rate					279
Total Net SF					30,110
Grossing Factor					1.62
Total Gross SF					48,778
Gross SF per FTE					146



Detailed System Action Report



Detailed System Action Report

District: Netcong Boro
School Name: Netcong Elem

District Code: 3520
School Code: 060

County: Morris
LRFP Name: Netcong

Site Name	Asset Type	Asset Name	Building Use	Total Existing Area (GSF)	Original Construction Date	System Action Description	Applicable SF	Estimated Project Start Year	Tier	District Estimated Cost	Project Status
Netcong Elem (Site)	Building	PreK-8 School	Instructional: Multi-Story	47,842	1926	Install New Rooftop Ventilators	0	2007	I: Health and Safety/Capacity	\$20,000	NA
Netcong Elem (Site)	Building	PreK-8 School	Instructional: Multi-Story	47,842	1926	Extensive Masonry Work	0	2007	I: Health and Safety/Capacity	\$800,000	NA
Netcong Elem (Site)	Building	PreK-8 School	Instructional: Multi-Story	47,842	1926	Remove all Asbestos Floor Tile	0	2007	I: Health and Safety/Capacity	\$110,000	NA
Netcong Elem (Site)	Building	PreK-8 School	Instructional: Multi-Story	47,842	1926	Replace all Domestic Water Piping	0	2007	I: Health and Safety/Capacity	\$49,000	NA
Netcong Elem (Site)	Building	PreK-8 School	Instructional: Multi-Story	47,842	1926	Replace all Rainwater Leaders	0	2007	I: Health and Safety/Capacity	\$2,000	NA
Netcong Elem (Site)	Building	PreK-8 School	Instructional: Multi-Story	47,842	1926	Replace all Sidewalks	0	2007	I: Health and Safety/Capacity	\$45,000	NA
Netcong Elem (Site)	Building	PreK-8 School	Instructional: Multi-Story	47,842	1926	Replace Catch basin	0	2007	I: Health and Safety/Capacity	\$35,000	NA
Netcong Elem (Site)	Building	PreK-8 School	Instructional: Multi-Story	47,842	1926	Upgrade Entire Electrical System	0	2007	III: Technology	\$200,000	NA
Netcong Elem (Site)	Building	PreK-8 School	Instructional: Multi-Story	47,842	1926	Air Condition Entire School	0	2007	I: Health and Safety/Capacity	\$770,000	NA
Netcong Elem (Site)	Building	PreK-8 School	Instructional: Multi-Story	47,842	1926	Upgrade Interior Lighting of Building	0	2007	I: Health and Safety/Capacity	\$50,000	NA
Netcong Elem (Site)	Building	PreK-8 School	Instructional: Multi-Story	47,842	1926	Install Full Sprinkler System	0	2007	I: Health and Safety/Capacity	\$415,000	NA
Netcong Elem (Site)	Building	PreK-8 School	Instructional: Multi-Story	47,842	1926	Install New Boilers	0	2007	I: Health and Safety/Capacity	\$300,000	NA
Netcong Elem (Site)	Building	PreK-8 School	Instructional: Multi-Story	47,842	1926	Install New Unvents and Piping Throughout School	0	2007	I: Health and Safety/Capacity	\$250,000	NA
Netcong Elem (Site)	Building	PreK-8 School	Instructional: Multi-Story	47,842	1926	New Roof for Entire School	0	2007	I: Health and Safety/Capacity	\$250,000	NA
Netcong Elem (Site)	Building	PreK-8 School	Instructional: Multi-Story	47,842	1926	Repave Playground Area	0	2007	I: Health and Safety/Capacity	\$8,000	NA
Netcong Elem (Site)	Building	PreK-8 School	Instructional: Multi-Story	47,842	1926	Replace all Curbing	0	2007	I: Health and Safety/Capacity	\$21,000	NA
Netcong Elem (Site)	Building	PreK-8 School	Instructional: Multi-Story	47,842	1926	Replace all Sanitary Piping	0	2007	I: Health and Safety/Capacity	\$49,000	NA
Netcong Elem (Site)	Building	PreK-8 School	Instructional: Multi-Story	47,842	1926	1966 Building Gracing	0	2007	I: Health and Safety/Capacity	\$150,000	NA
Netcong Elem (Site)	Building	PreK-8 School	Instructional: Multi-Story	47,842	1926	Install Emergency generator	0	2007	I: Health and Safety/Capacity	\$53,000	NA
Netcong Elem (Site)	Building	PreK-8 School	Instructional: Multi-Story	47,842	1926	Upgrade all Bathrooms ADA Compliant	0	2007	I: Health and Safety/Capacity	\$20,000	NA



Detailed System Action Report

Netcong Elem (Site)	Building	PreK-8 School	Instructional: Multi-Story	47,842	1926	Upgrade Exterior Lighting of Building	0	2007	Health and Safety/Capacity	\$4,000	NA
---------------------	----------	---------------	-------------------------------	--------	------	---------------------------------------	---	------	----------------------------	---------	----

Total Estimated Costs		\$3,601,000
Prior to 2005		\$0
2005		\$0
2006		\$0
2007		\$3,601,000
2008		\$0
2009		\$0
2010 and beyond		\$0



Detailed Inventory Action Report



Detailed Inventory Action Report

District: Netcong Boro
Existing School: Netcong Elem

District Code: 3520
School Code: 060

County: Morris
Existing Grades: K, 1, 2, 3, 4, 5, 6, 7, 8, PK4,
SCSEPK, SCSEKS

Proposed School Name: Netcong Elem

LRFP Name: Netcong

Proposed Grades: K, 1, 2, 3, 4, 5, 6, 7, 8, PK4

ROOM DETAIL (If Applicable)				PROPOSED WORK						
Site Name	Asset Name	Room Type	Room Name	Room Qty.	Inventory Action	Estimated Project Start Year	Tier	Total Applicable SF	District Estimated Cost	Project Status
Netcong Elem (Site)	Netcong Indians Football Field - Not In Use				OFF-LINE NEW	2001	IV: Other Local Objectives		\$0	NA
Netcong Elem (Site)	PreK-8 School	General Classroom, Grades 4-5	General Classroom	1	CONSTRUCTION NEW	2007	II: FES Educational Adequacy	900	\$148,500	NA
Netcong Elem (Site)	PreK-8 School	General Classroom, Grades 1-3	General Classroom	1	CONSTRUCTION NEW	2007	II: FES Educational Adequacy	900	\$148,500	NA
Netcong Elem (Site)	PreK-8 School	General Classroom, Grades 4-5	General Classroom	1	CONSTRUCTION NEW	2007	I: Health and Safety/Capacity	900	\$148,500	NA
Netcong Elem (Site)	PreK-8 School	General Classroom, Grades 1-3	General Classroom	1	CONSTRUCTION NEW	2007	II: FES Educational Adequacy	900	\$148,500	NA
Netcong Elem (Site)	PreK-8 School	Food Services / Large Group	Kitchen Addition	1	CONSTRUCTION NEW	2007	I: Health and Safety/Capacity	400	\$66,000	NA

Totals:	\$660,000
---------	-----------

Inventory Actions Totals:	
DEMOLITION	0 \$0
DISPOSE	0 \$0
LEASE	0 \$0
NEW CONSTRUCTION	4,000 \$660,000
OFF-LINE	0 \$0
PURCHASE	0 \$0
REASSIGNMENT	0 \$0
RECONFIGURATION	0 \$0

Year Totals:	
Prior to 2005	0 \$0
2005	0 \$0
2006	0 \$0
2007	4,000 \$660,000
2008	0 \$0
2009	0 \$0
2010 and beyond	0 \$0



District LRFP Action Summary Report



District LRFPP Action Summary Report

District Code: 3520 County: Morris
 District Name: Netcong LRFPP Name: Netcong

School(s) Served	Site Name	Asset Type	Asset Name	Ownership	Lease	Purchase	New Construction / Bldg. Addition	New Construction / New Building	Reconfiguration and / or Reassignment	Demolition	Dispose	Off-Line	Systems	Total Estimated Costs	Project Status		
																Action Type / District Estimated Costs	
SITES																	
n/a	n/a				n/a	n/a	n/a	n/a	n/a	n/a	n/a	n/a	n/a	n/a	n/a		
SCHOOLS																	
n/a	n/a				n/a	n/a	n/a	n/a	n/a	n/a	n/a	n/a	n/a	n/a	n/a		
ASSETS																	
Netcong Elem. (Site)	Netcong Elem. (Site)	Building	PreK-8 School	District Owned	n/a	n/a	\$660,000	n/a	n/a	n/a	n/a	n/a	n/a	\$3,601,000	\$4,261,000		
			Netcong Indians Football Field - Not In Use	District Owned	n/a	n/a	n/a	n/a	n/a	n/a	n/a	n/a	n/a	n/a	n/a		
Netcong Elem. (Site)	Netcong Elem. (Site)	Building		District Owned	n/a	n/a	n/a	n/a	n/a	n/a	n/a	n/a	n/a	n/a	\$0		
DISTRICT TOTALS																	
							\$0	\$0	\$0	\$0	\$0	\$0	\$0	\$0	\$0	\$4,261,000	
YEAR TOTALS																	
2006							\$0	\$0	\$0	\$0	\$0	\$0	\$0	\$0	\$0	\$0	
2007							\$0	\$0	\$0	\$0	\$0	\$0	\$0	\$0	\$0	\$0	
2008							\$0	\$0	\$0	\$0	\$0	\$0	\$0	\$0	\$0	\$0	
2009							\$0	\$0	\$0	\$0	\$0	\$0	\$0	\$0	\$0	\$0	
2010							\$0	\$0	\$0	\$0	\$0	\$0	\$0	\$0	\$0	\$0	
2011 and beyond							\$0	\$0	\$0	\$0	\$0	\$0	\$0	\$0	\$0	\$0	
TIER TOTALS																	
I: Health and Safety/Capacity							\$0	\$0	\$0	\$0	\$0	\$0	\$0	\$0	\$0	\$3,601,000	\$3,601,000
II: FES Educational Adequacy							\$0	\$0	\$0	\$0	\$0	\$0	\$0	\$0	\$0	\$0	\$445,500
III: Technology							\$0	\$0	\$0	\$0	\$0	\$0	\$0	\$0	\$0	\$0	\$200,000
IV: Other Local Objectives							\$0	\$0	\$0	\$0	\$0	\$0	\$0	\$0	\$0	\$0	\$0

SUMMARY	
Total Number of Existing Schools:	1
Total Number of Proposed Schools:	1
Total Number of Existing Sites:	1
Total Number of Proposed Sites:	1
Total Number of Existing Instructional Buildings:	1
Total Number of Proposed Instructional Buildings:	1
Total Number of Proposed Instructional Buildings with New Construction:	1



FES Room Type and Square Footage Analysis



FES Room Type and Square Footage Analysis

District Name: Netcong Boro County: Morris
 Existing School Name: Netcong Elem Proposed School Name: Netcong Elem
 LRRP: Netcong District Code: 3520 School Code: 060

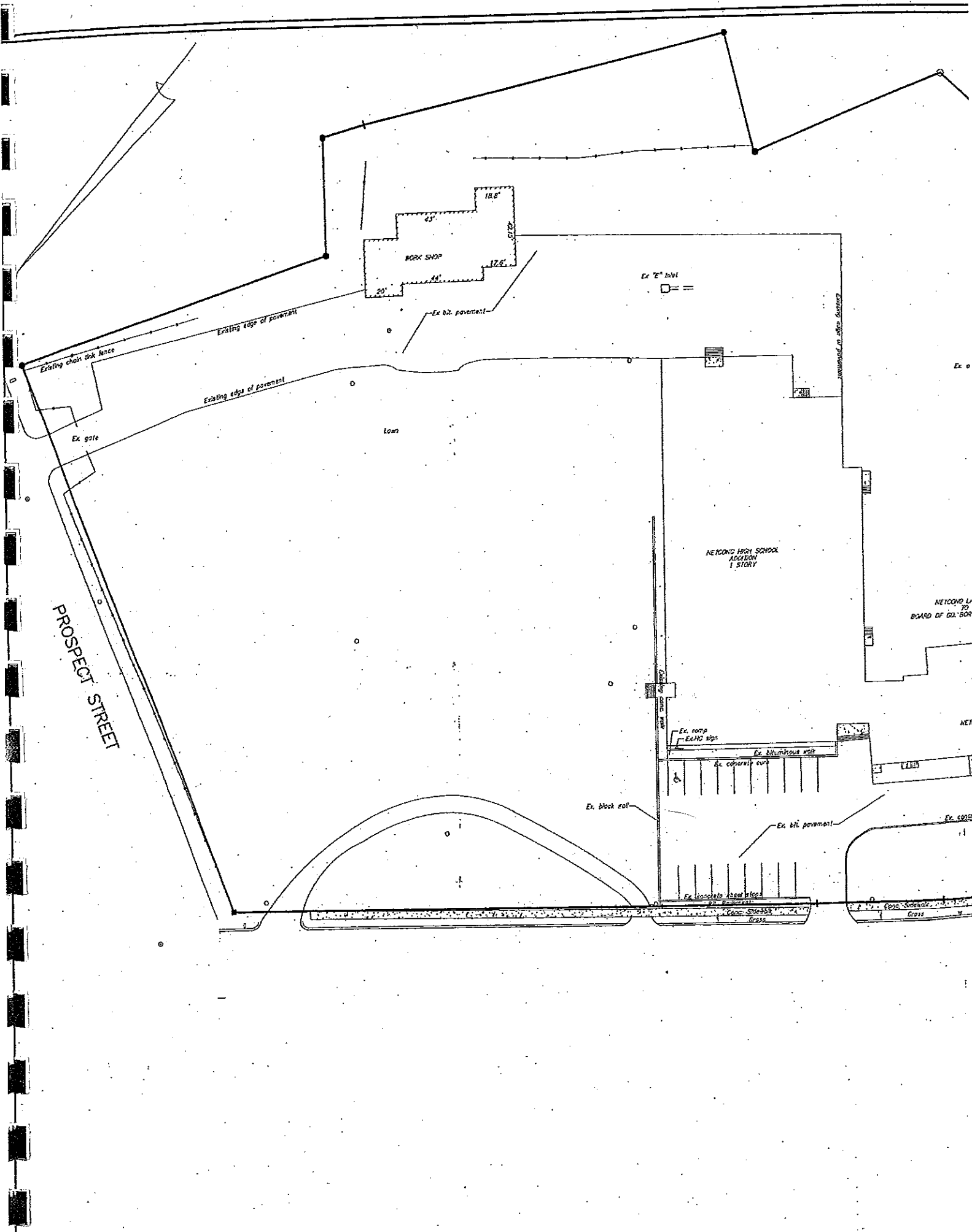
NOTE: The FES Analysis is based on the FES version referenced in the 2002 Bi-Annual Report.

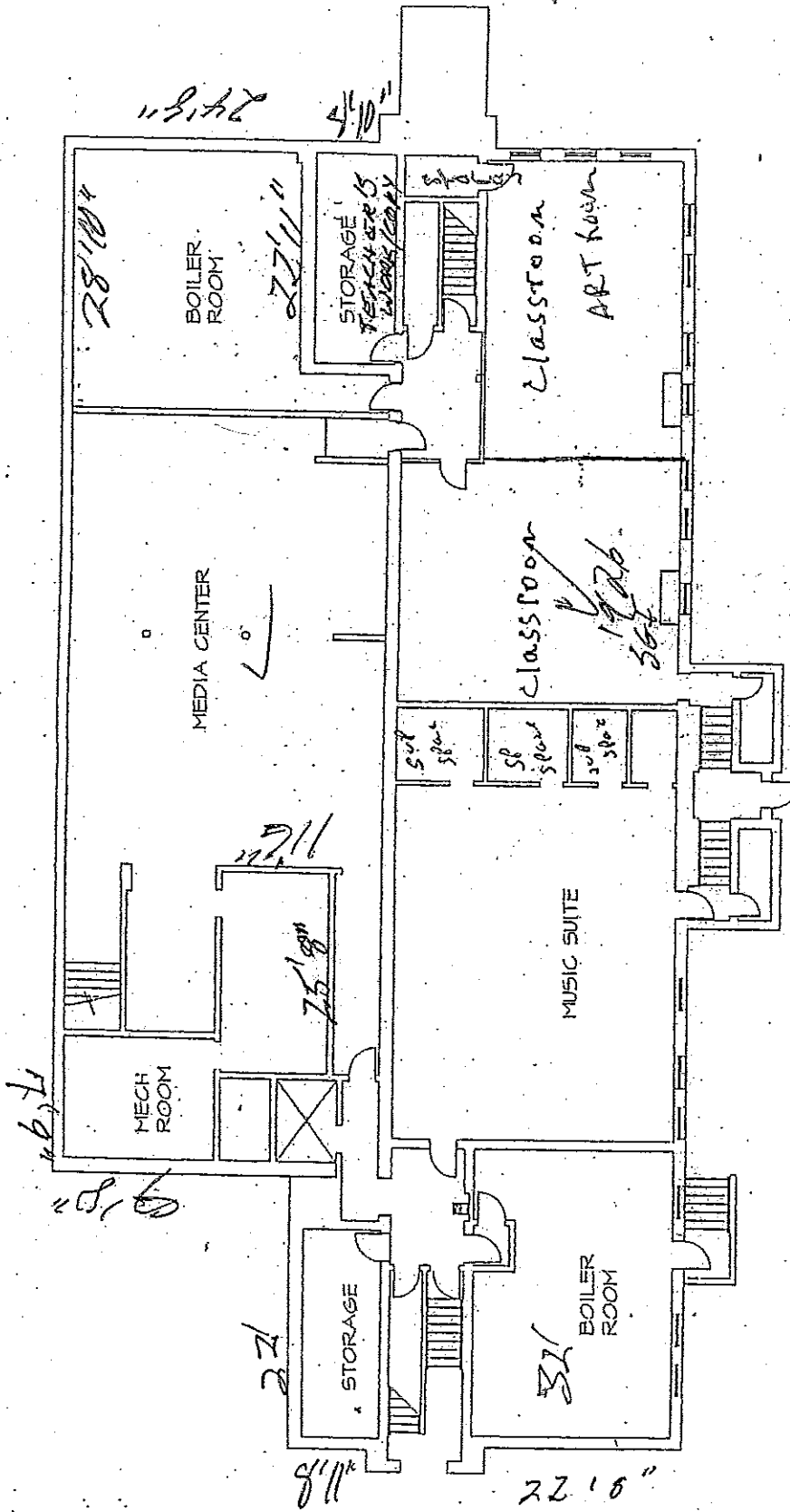
EXISTING		PROPOSED	
Room Type	FES Model Room Type	Total Room Type NSF	Room Type
Existing FES Model: Elementary/Middle School Existing Grades: SCSEK5 Existing FES Capacity: 249.01 Existing FES GSF/Student Allowance: 128.15 Unadjusted Existing GSF/Student (no SF exclusions): 192.13			
Proposed FES Model: Elementary/Middle School Proposed Grades: K, 1, 2, 3, 4, 5, 6, 7, 8, PK4 Proposed FES Capacity: 328.21 Proposed FES GSF/Student Allowance: 127.99 Unadjusted Proposed GSF/Student (no SF exclusions): 157.96			
		Total Room Type NSF	FES Model Room Type
		Total Room Type NSF	Total Room Type NSF
FES Capacity Generating			
Self-Contained Special Education, PK	Yes	0	Self-Contained Special Education, PK Yes 0
Self-Contained Special Education, Kindergarten	Yes	0	Self-Contained Special Education, Kindergarten Yes 0
Self-Contained Special Education, Grades 6-8	Yes	0	Self-Contained Special Education, Grades 6-8 Yes 0
Pre-Kindergarten	Yes	699	Pre-Kindergarten Yes 699
Kindergarten	Yes	740	Kindergarten Yes 740
General Classroom, Grades 1-3	Yes	3,795	General Classroom, Grades 1-3 Yes 5,595
General Classroom, Grades 4-5	Yes	2,280	General Classroom, Grades 4-5 Yes 4,080
General Classroom, Grades 6-8	Yes	3,202	General Classroom, Grades 6-8 Yes 3,202
Self-Contained Special Education, Grades 1-5	Yes	0	Self-Contained Special Education, Grades 1-5 Yes 0
Total NSF X 1.40 Grossing Factor		15,002	Total NSF X 1.40 Grossing Factor 20,042
FES GSF Allowance		14,679	FES GSF Allowance 19,323
Difference (Existing - FES Allowance)		324	Difference (Existing - FES Allowance) 719
Specialized Space			
Multi-Purpose (PE and Food Services)	No	5,480	Multi-Purpose (PE and Food Services) No 5,480
Food Services / Large Group	Yes	0	Food Services / Large Group Yes 400
Physical Education / Large Group	Yes	1,319	Physical Education / Large Group Yes 1,319
Assembly / Large Group	No	1,020	Assembly / Large Group No 1,020
Media Services	Yes	1,194	Media Services Yes 1,194
Small Group Instruction	Yes	1,470	Small Group Instruction Yes 1,470
Science	Yes	840	Science Yes 840
Visual and Performing Arts	Yes	2,325	Visual and Performing Arts Yes 2,325

FES Room Type and Square Footage Analysis

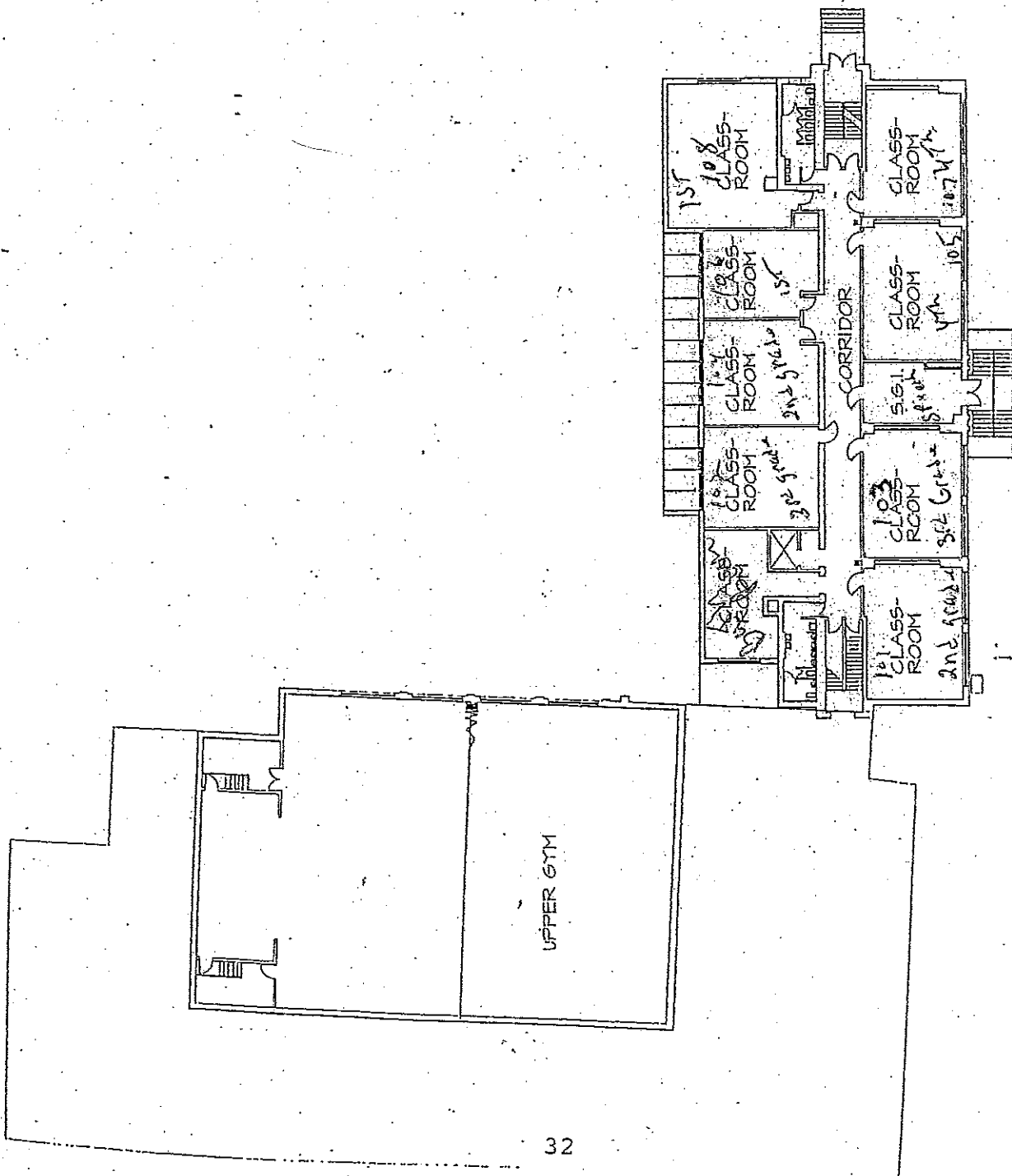
Copyright © 1998-2005 VFA, Inc. All rights reserved.

Technological Literacy	924	Technological Literacy	924	Yes	Yes	924
Total NSF X 1.40 Grossing Factor	20,401	Total NSF X 1.40 Grossing Factor	20,401	Yes	Yes	20,961
FES GSF Allowance	15,636	FES GSF Allowance	15,636			20,583
Difference (Existing - FES Allowance)	4,765	Difference (Existing - FES Allowance)	4,765			378
Administrative / Support						
Faculty	644	Faculty	644	Yes	Yes	644
Health Services	264	Health Services	264	Yes	Yes	264
Administrative / Student Services	830	Administrative / Student Services	830	Yes	Yes	830
Total NSF X 1.40 Grossing Factor	2,433	Total NSF X 1.40 Grossing Factor	2,433			2,433
FES GSF Allowance	1,596	FES GSF Allowance	1,596			2,100
Difference (Existing - FES Allowance)	838	Difference (Existing - FES Allowance)	838			333
School Totals		School Totals				
Total NSF X 1.40 Grossing Factor	37,836	Total NSF X 1.40 Grossing Factor	37,836			43,436
FES GSF Allowance	31,910	FES GSF Allowance	31,910			42,007
Difference (Existing - FES Allowance)	5,926	Difference (Existing - FES Allowance)	5,926			1,430

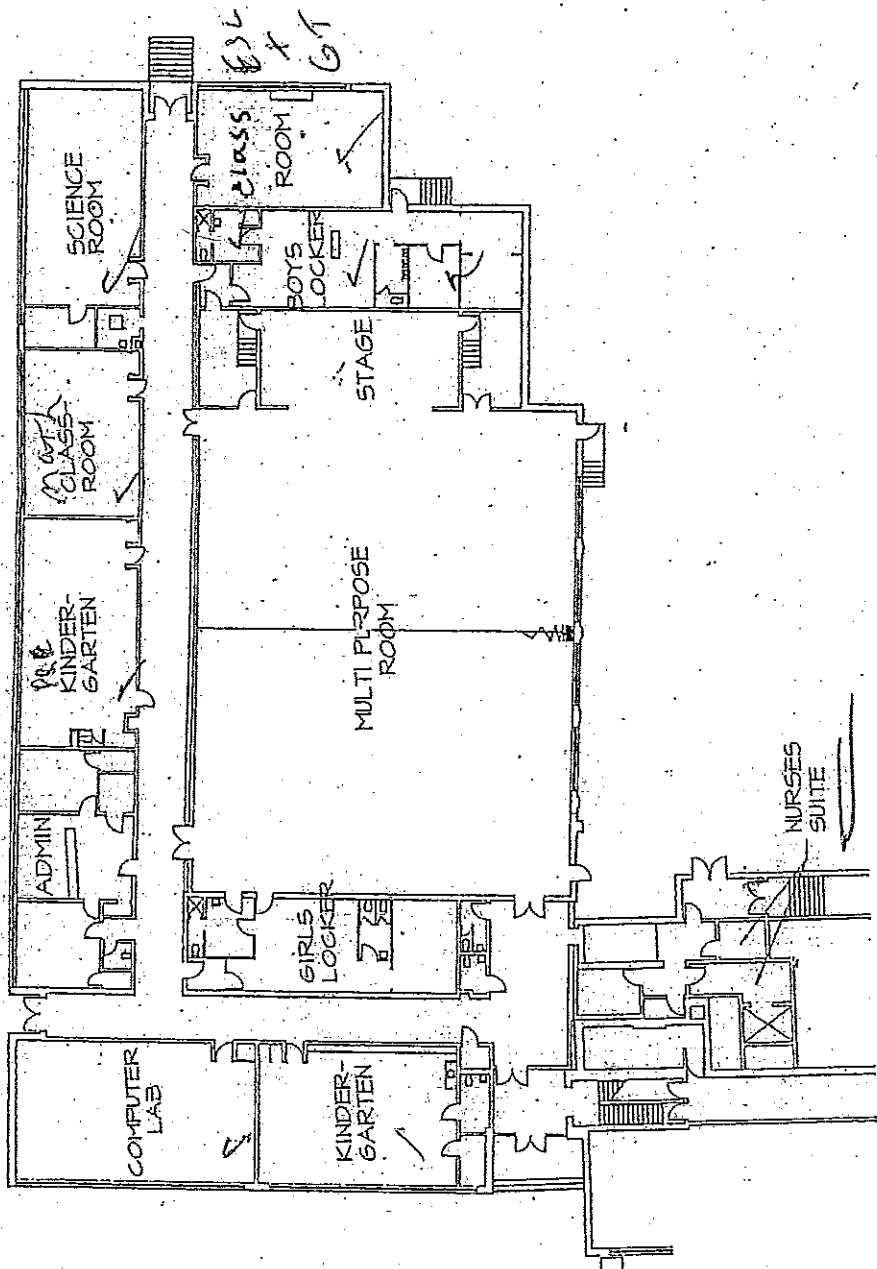




NETCONG ELEMENTARY SCHOOL - BASEMENT PLAN

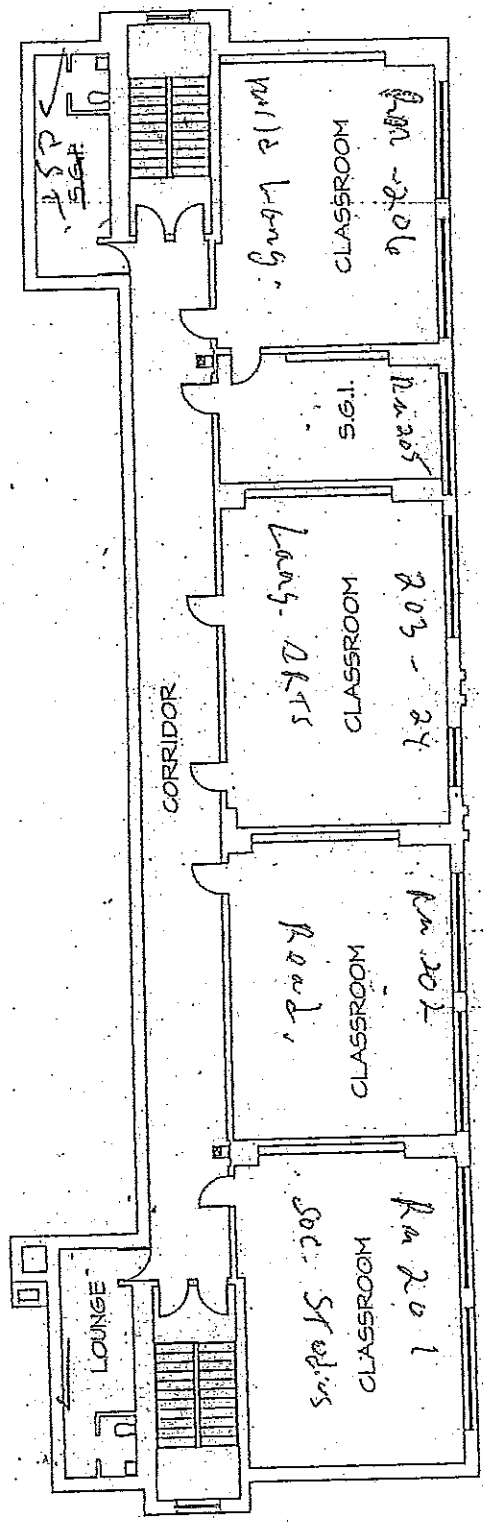


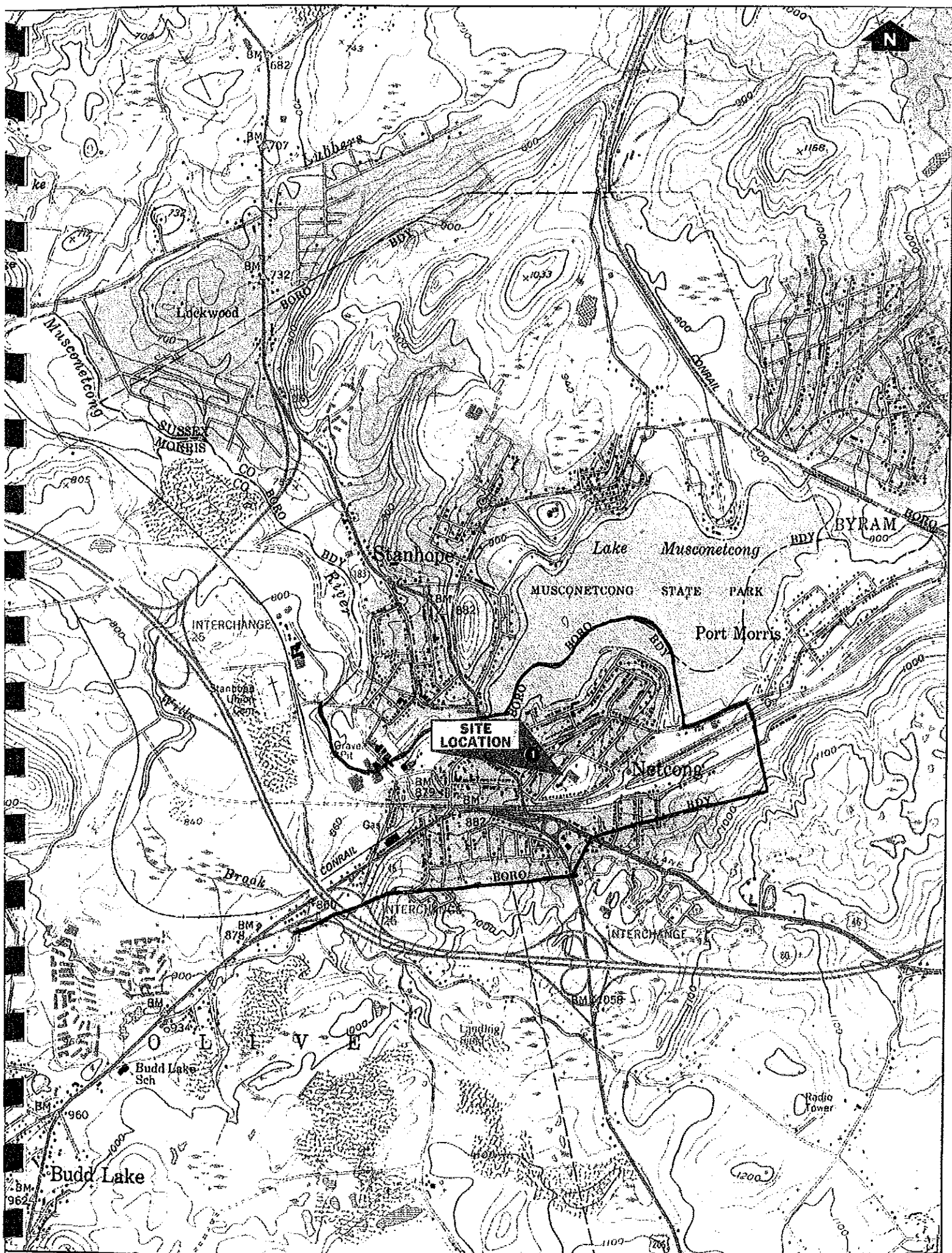
G ELEMENTARY SCHOOL - PARTIAL FIRST FLOOR PLAN



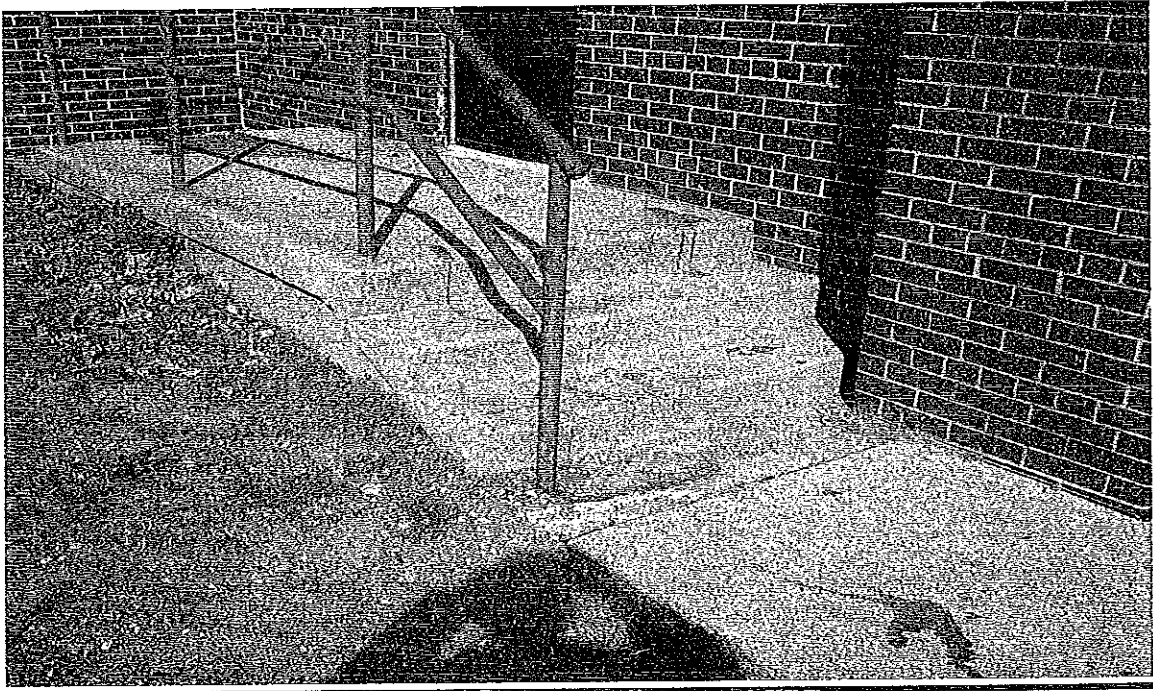
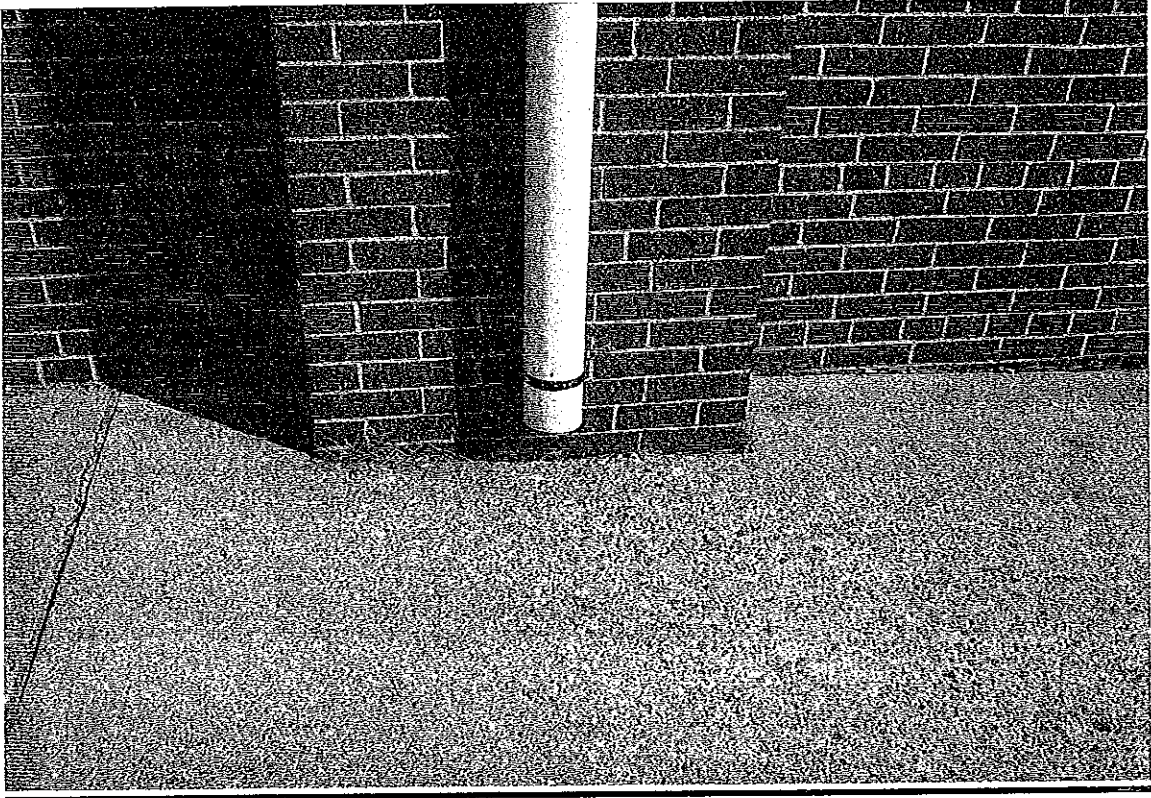
NETCONG ELEMENTARY SCHOOL - PARTIAL FIRST FLOOR

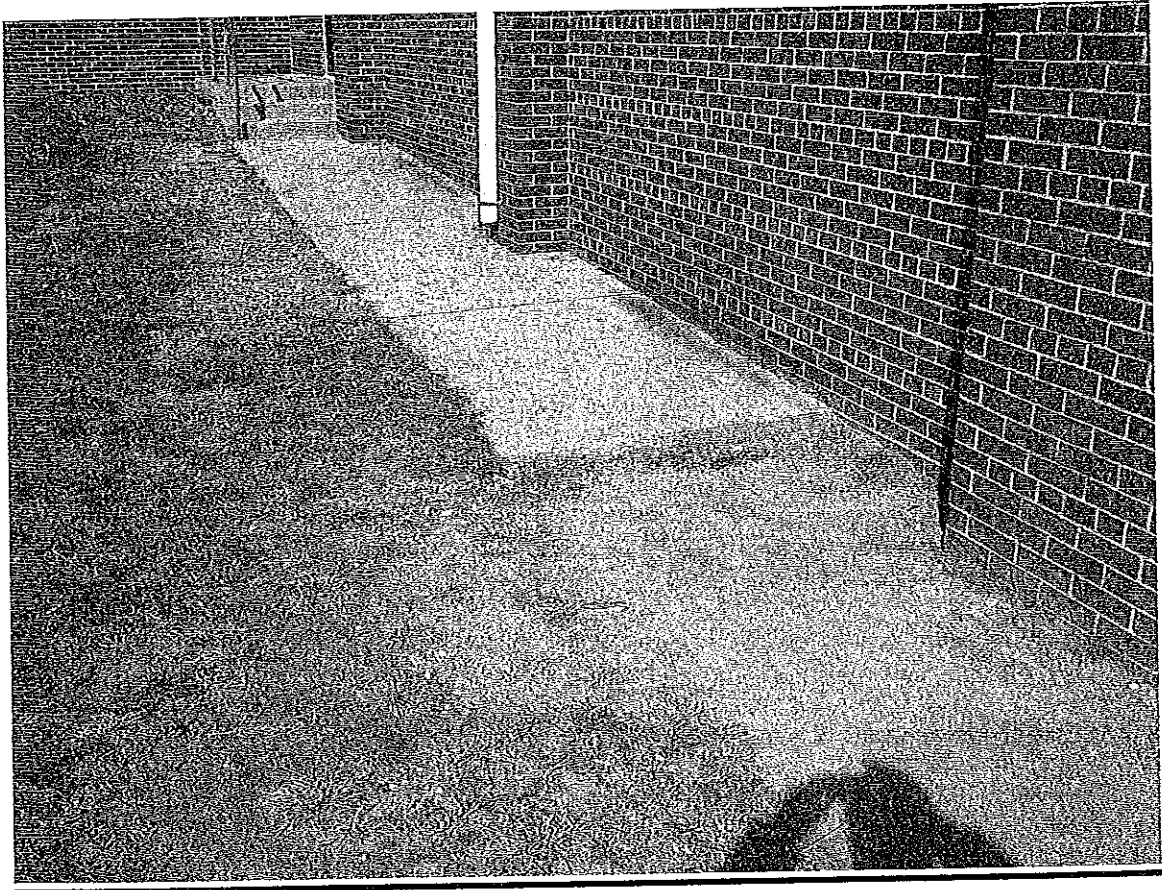
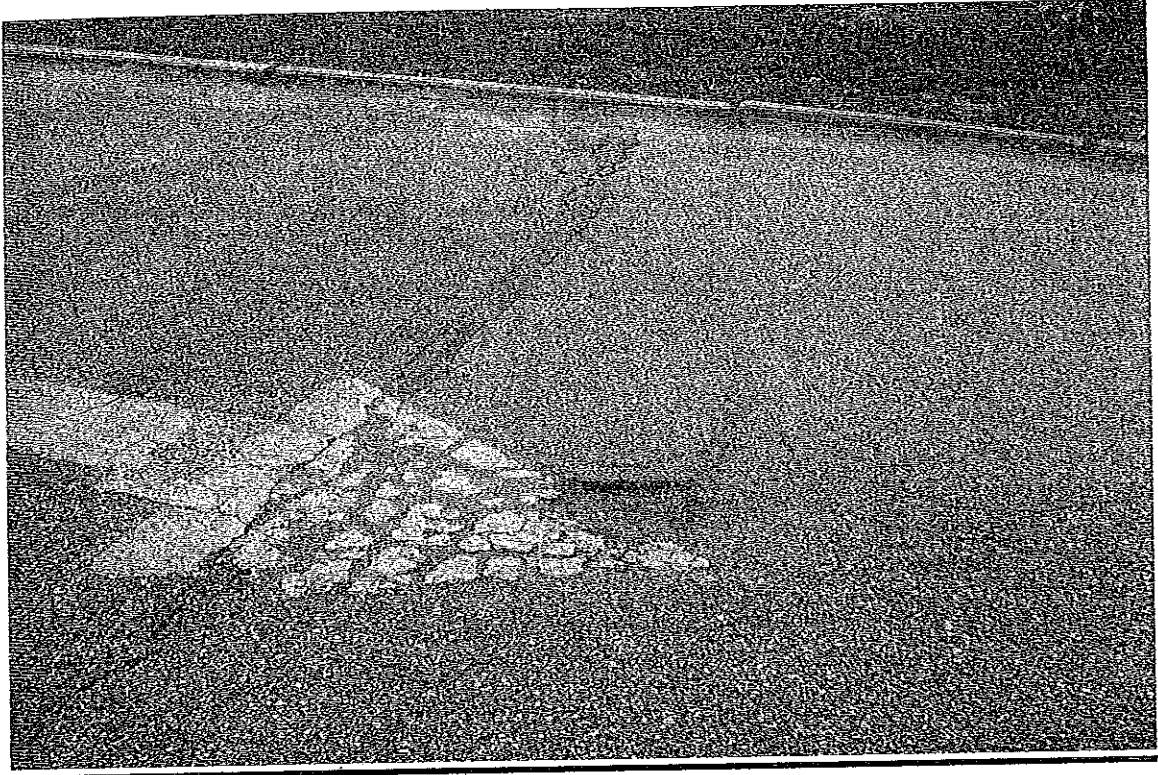
NETCONG ELEMENTARY SCHOOL - SECOND FLOOR PLAN

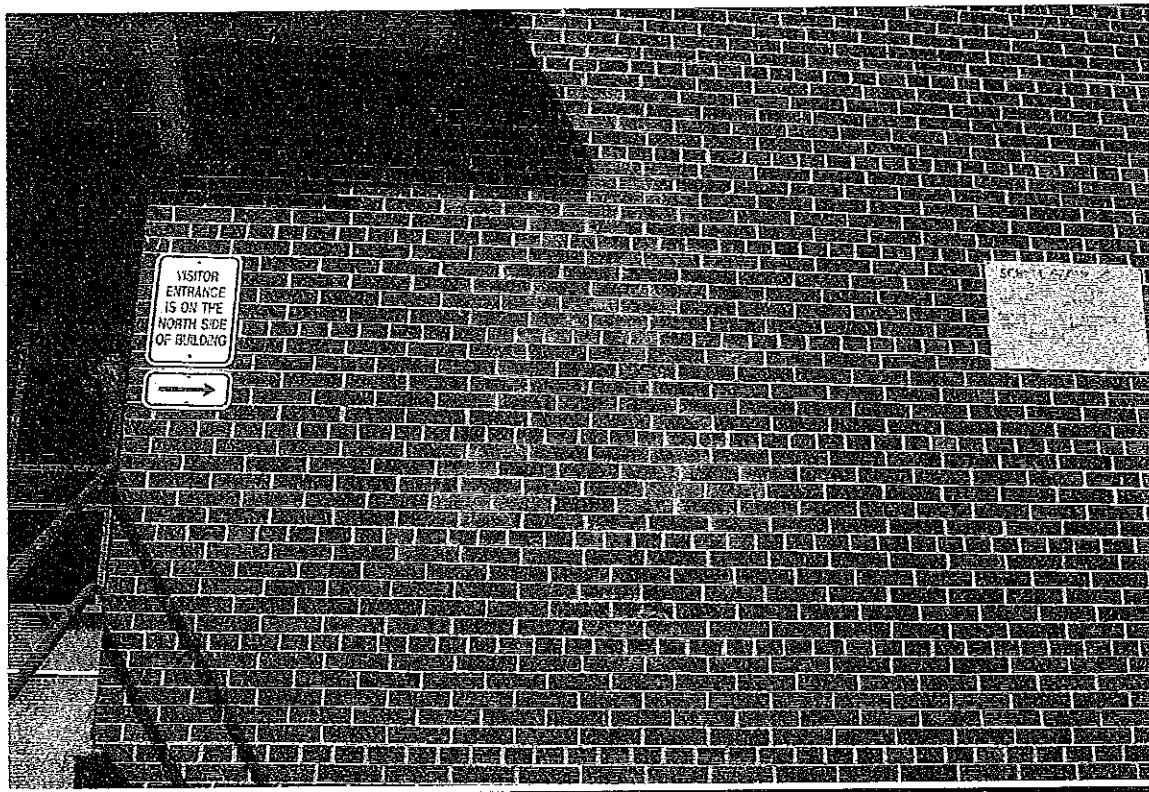


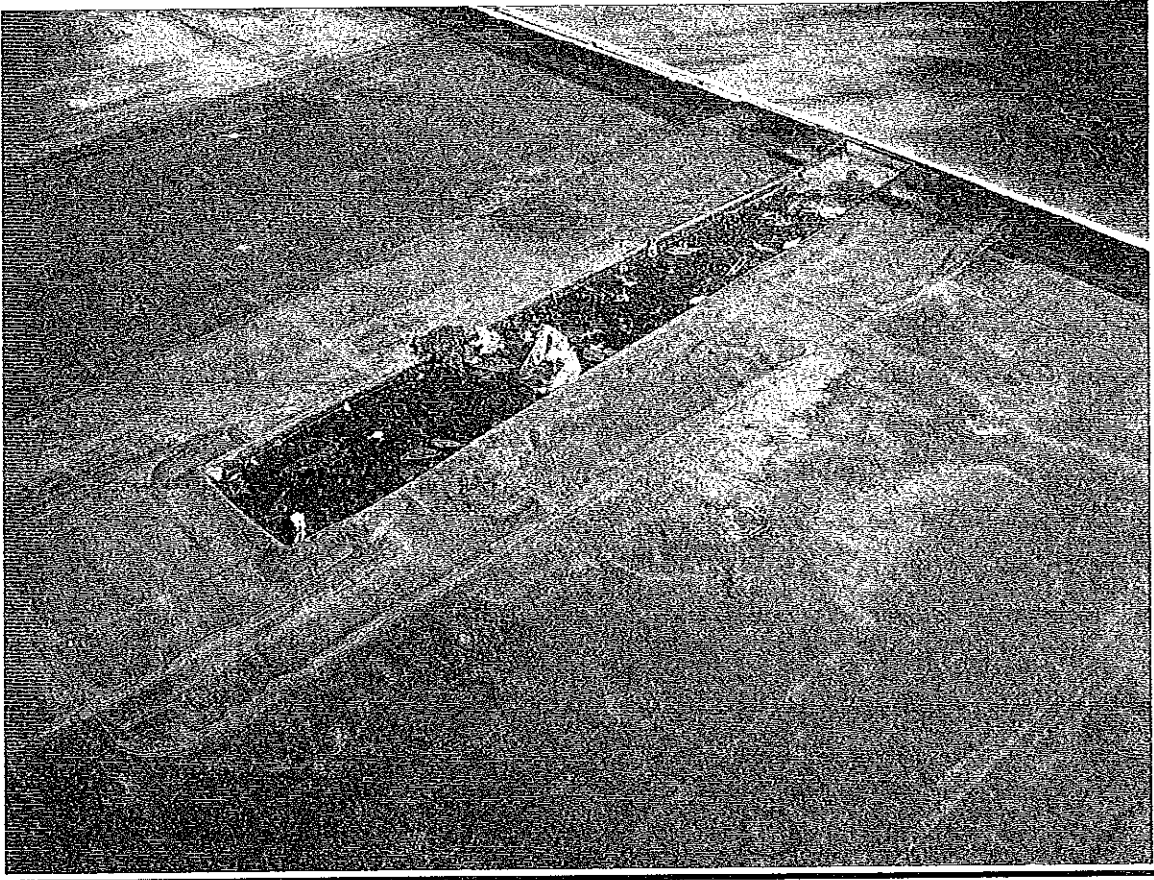
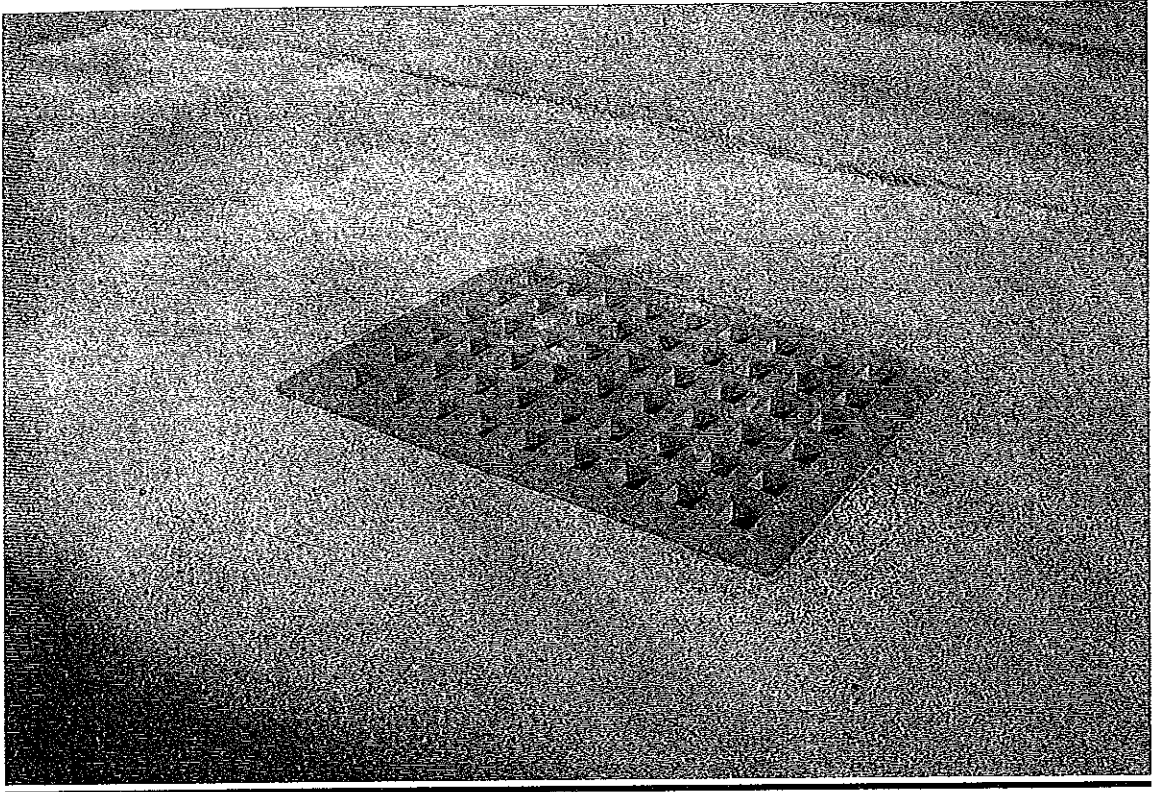


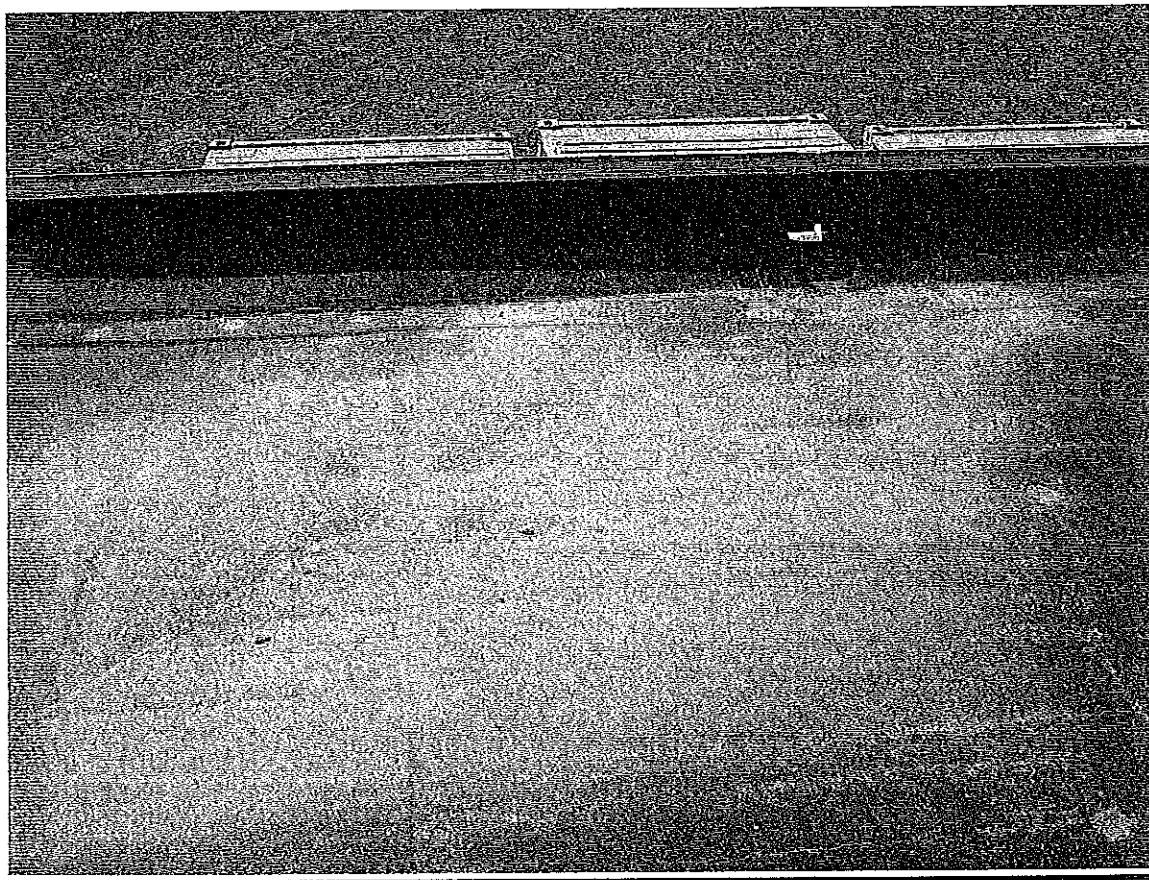
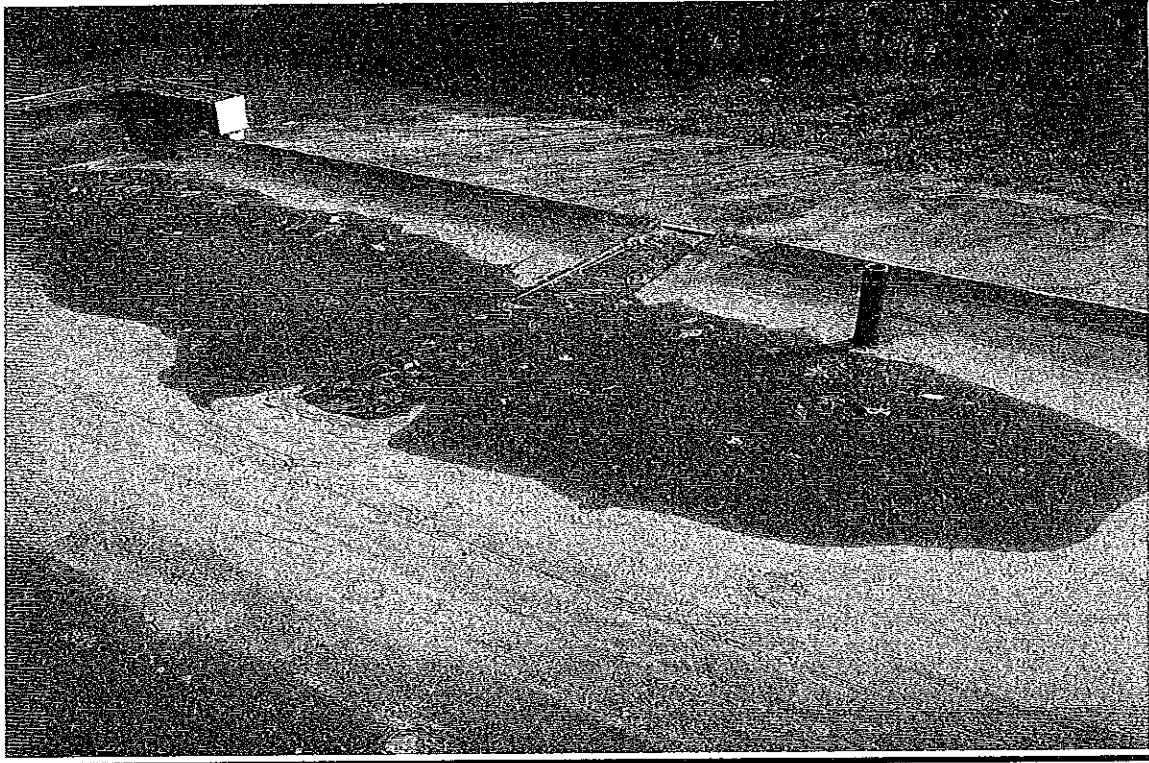
General Photos

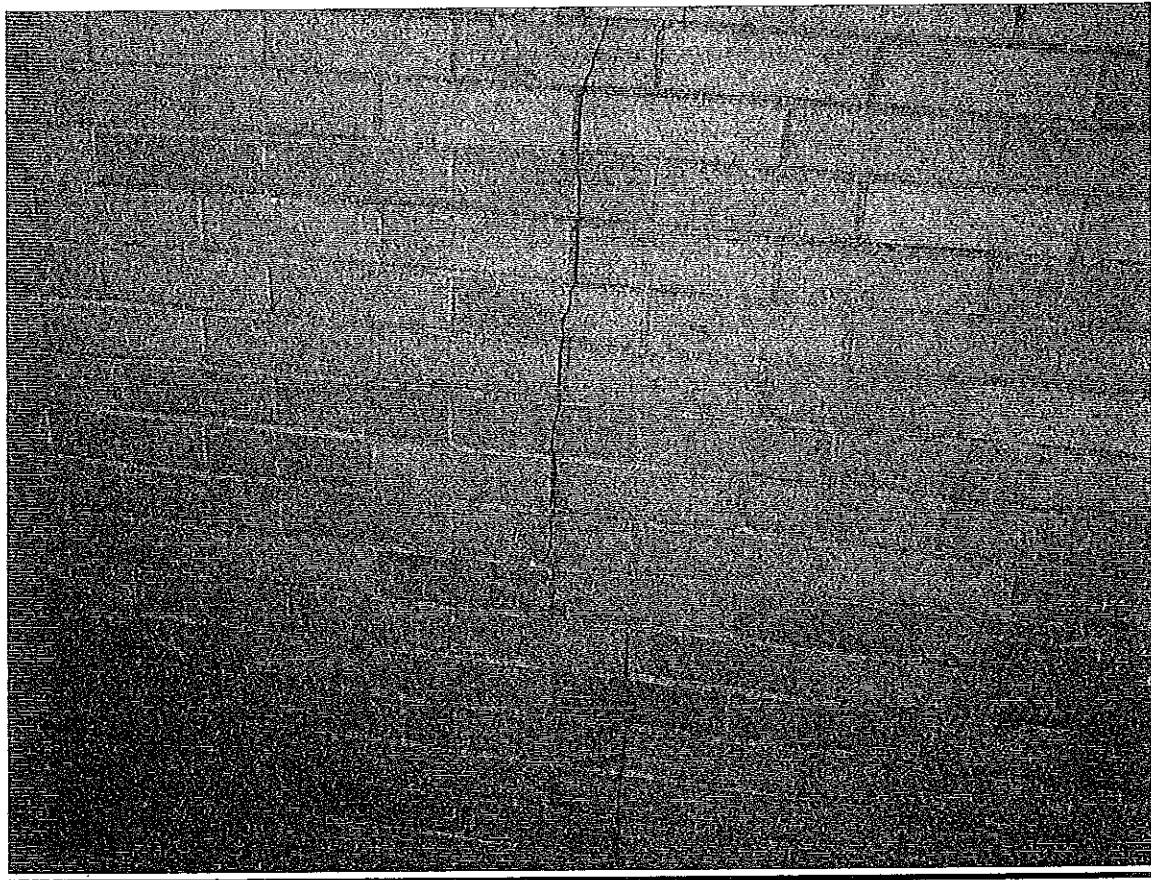
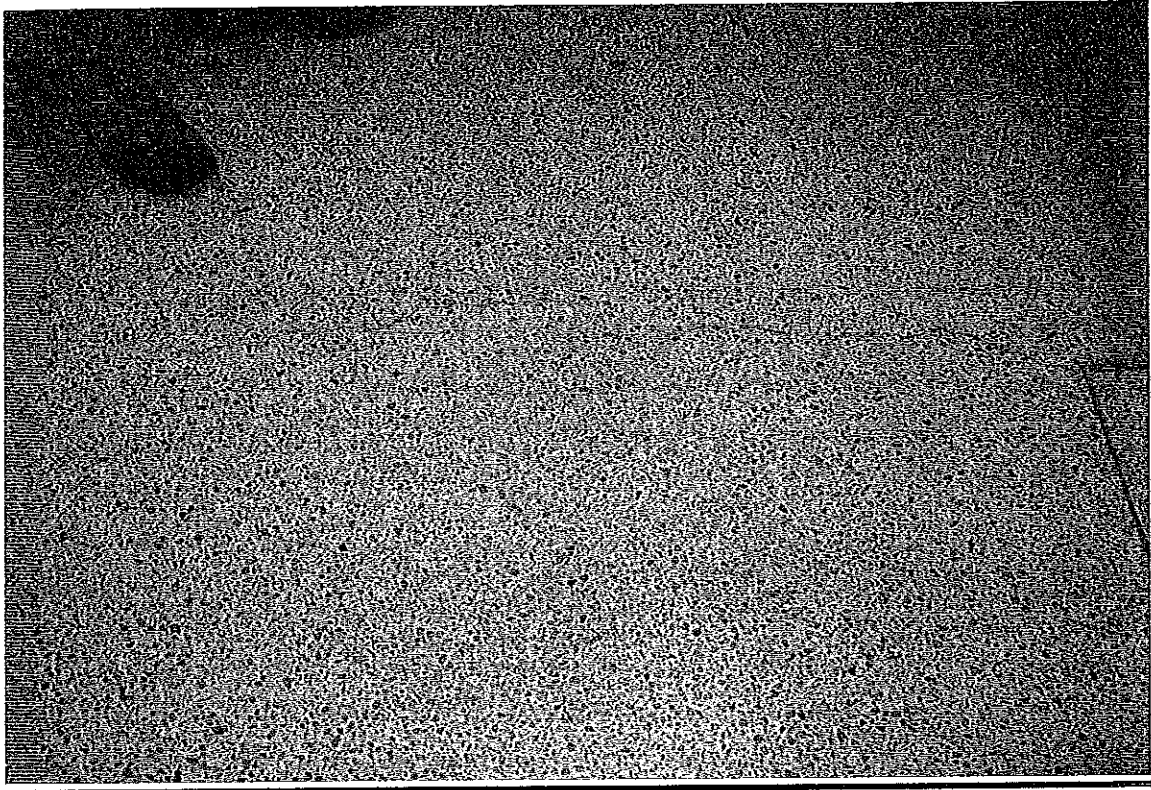












**EXTRACT FROM THE MINUTES
OF A MEETING OF THE BOARD OF EDUCATION
OF THE BOROUGH OF NETCONG, MORRIS COUNTY
NEW JERSEY, AS RECORDED IN THE
OFFICIAL MINUTE BOOK**

Certified Minutes of the Meeting of August 22, 2006

The following members of the Board of Education were present:

Mrs. Dalesandro, President, Mrs. Still, Vice-President, Mrs. Criscuolo, Mrs. Duckles, Mr. Olivo, Mrs. Popelka, Mrs. Secola, Mrs. Williams

The following members were absent: Mrs. Moros

Also present: Mr. James Grube, Superintendent/Principal, Mrs. Christine M. Werner, Interim School Business Administrator/Board Secretary

The following resolution was offered by Mr. Olivo, seconded by Mrs. Still and adopted by the Board of Education:

BE IT RESOLVED that the Netcong Board of Education to approve the following resolution pertaining to the submission of the School District Long Range Facility Plan.

WHEREAS, every New Jersey school district must submit a Long Range Facility Plan to the Commissioner of Education every five years, specifically every year ending in "0" or "5", and;

WHEREAS, regulations require that every Board of Education must approve of the submission of this Plan;

NOW THEREFORE BE IT RESOLVED, that Netcong Board of Education does hereby authorize the Superintendent and/or the Interim School Business Administrator to submit the attached Long Range Facility Plan for the Netcong School District to the Commissioner of Education, and;

BE IT FURTHER RESOLVED, that the Superintendent and/or the Interim School Business Administrator, in accordance with the regulation, shall provide an advisory copy of this plan to the local planning board.

Vote: Submission of the Netcong School District Long Range Facility Plan

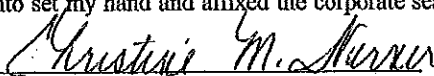
Ayes: Mrs. Criscuolo, Mrs. Duckles, Mr. Olivo, Mrs. Popelka, Mrs. Secola, Mrs. Still, Mrs. Williams and Mrs. Dalesandro, President.

Nays: None

Abstentions: None

STATE OF NEW JERSEY)
)SS:
COUNTY OF MORRIS)

I, Christine M. Werner, Interim Secretary of the Board of Education of the Borough of Netcong, in the County of Morris, State of New Jersey, hereby certify that the foregoing extract from the minutes of the meeting of the Board of Education of said district duly called and held on August 22, 2006 has been compared by me with the original minutes as officially recorded in my office in the minute book of said Netcong Board of Education and is a true, complete copy thereof and of the whole of said original minutes as far as the same relate to the subject matter referred to in said extract; in witness I have hereunto set my hand and affixed the corporate seal of the Board of Education this 24th day of August, 2006.


Christine M. Werner
Interim School Business Administrator/
Board Secretary

NETCONG ELEMENTARY SCHOOL

26 College Road • Netcong • New Jersey 07857-1621
Telephone (973) 347-0020 Fax (973) 347-3676
www.netcongschool.org

Mr. James W. Grube
Superintendent/Principal
jgrube@netcongschool.org

Ms. Wendy Vander Vliet
Assistant Principal
wvandervliet@netcongschool.org

September 11, 2006

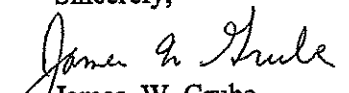
The Netcong Planning Board
23 Maple Ave
Netcong, NJ 07857

Dear Planning Board,

The Netcong School District is providing you with a copy of the Long Range Facility Plan (LRFP) submitted to the New Jersey Department of Education. This plan is required to be submitted by all school districts in the State of New Jersey. Please accept this copy of the Netcong School District's LRFP for your records.

If there are any questions or concerns regarding this matter, please don't hesitate to contact my office.

Sincerely,


James W. Grube
Superintendent/Principal