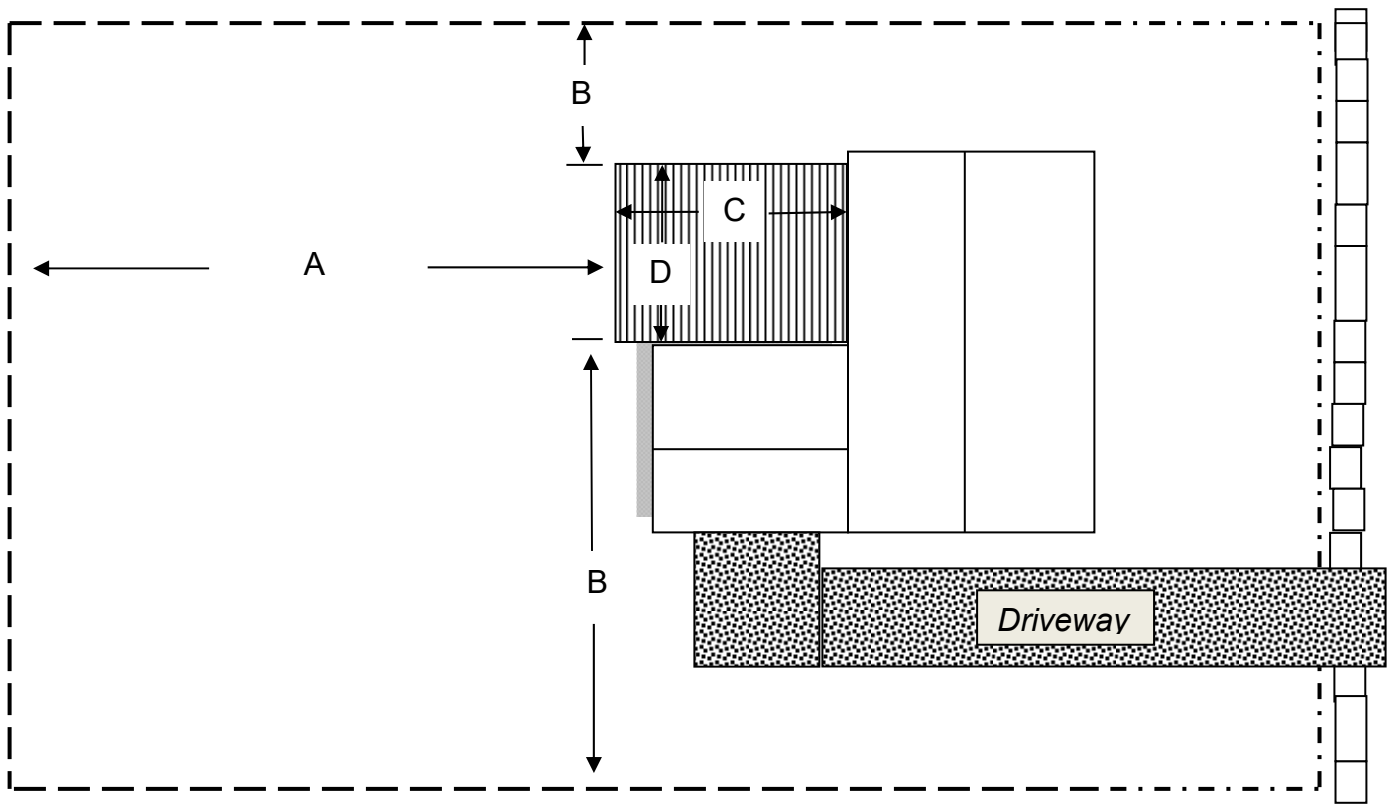


## Borough of Netcong – Deck Regulations Fact Sheet



- Decks are Accessory Uses;
- A zoning permit is required to construct a deck;
- A building permit is required to construct a deck. Contact the Byram Township Construction office at 973-347-2500, extension 123 for permit information.
- A copy of your property survey with deck location is required. Indicate the location of the deck and the following:
  - A – Distance from rear lot line
  - B – Distance from both side yard lot lines
  - C - Width of deck
  - D - Length of deck

For more detailed information access the Borough code online at:

**<http://www.ecycle360.com/NE0413>**

Chapter 194. LAND DEVELOPMENT PROCEDURES  
Article VIII. Zoning  
§ 194-56. Residential Zones  
B. Accessory Uses