

○ Carbon Monoxide Detector

● Smoke Detector

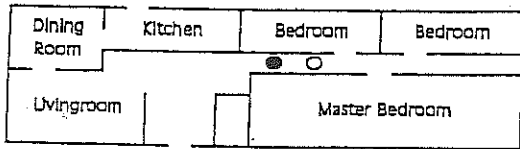


Figure 1

In a home with only one sleeping area on one floor the smoke and CO detectors are to be put in the hallway outside the bedrooms.

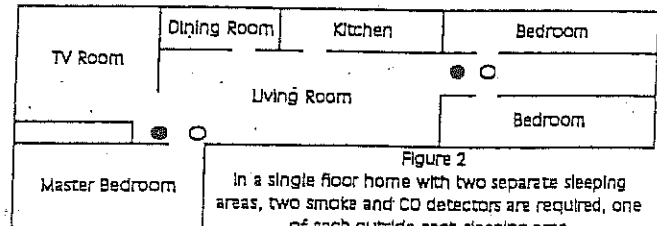


Figure 2

In a single floor home with two separate sleeping areas, two smoke and CO detectors are required, one of each outside each sleeping area.

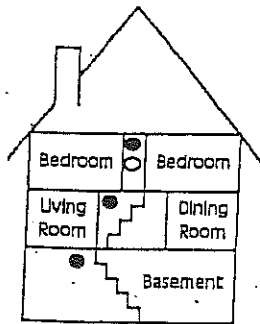


Figure 3

In multi-level homes, smoke detectors should be located outside sleeping areas and at every finished level of the home. CO detectors shall be located in every sleeping area.

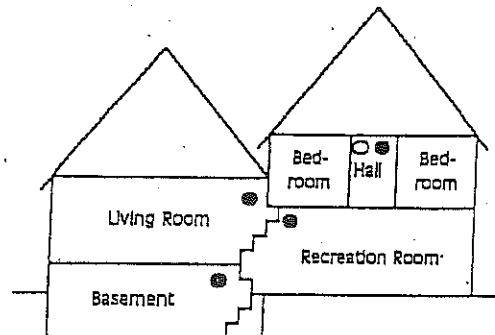


Figure 4

Basement level smoke detectors should be located in the bottom of basement stairwells. CO detectors shall be located in every sleeping area.

Description

Suitable for use on Class A (trash, wood, & paper), Class B (liquids & gases) and Class C fires (energized electrical equipment). The Full Home unit is fitted with a pressure gauge that provides at-a-glance status, is manufactured from lightweight aluminum and a tough nylon valve assembly.

Multi-Purpose Dry Chemical
UL Listed / Rated 1-A, 10-B:C
6 Year Warranty

Suitable for use on most common fires
MFG Brand Name : Kidde
MFG Model # : FA110
MFG Part # : 21007088

Specifications

Assembled Depth (In Inches) : 3.25 in
Assembled Height (In Inches) : 13.75 in
Assembled Weight (In LBS) : 3.9 lb
Assembled Width (In Inches) : 4.75 in
Color/Finish : Red
Commercial/Residential : Residential

